

To continue the teaching and healing ministry of Jesus Christ



LOMA LINDA UNIVERSITY
HEALTH



COMMUNITY BENEFIT REPORT – 2016 & IMPLEMENTATION STRATEGY 2017-2018

LOMA LINDA UNIVERSITY MEDICAL CENTER

LOMA LINDA UNIVERSITY CHILDREN'S HOSPITAL

LOMA LINDA UNIVERSITY BEHAVIORAL MEDICINE CENTER

LOMA LINDA UNIVERSITY MEDICAL CENTER – MURRIETA

COMMUNITY BENEFIT REPORT 2016

For the Fiscal year ending
December 31, 2016

Community Benefit Office:

11175 Mountain View Avenue,
Suite M
Loma Linda, California 92354
Office: (909) 558-3841
Fax: (909) 558-3812

Additional Information and
Community Benefit Reports
& Resources: <http://medical-center.lomalindahealth.org/about-us/community-benefit>

Please contact Chintan K. Somaiya
(csomaiya@llu.edu; 909 558-3268)
for questions or additional
information



At Loma Linda University Health (LLUH), our commitment to caring for the mind, body and spirit is part of everything we do. We're combining our education, clinical care and research programs to fulfill our mission — making man whole. Together, we'll strengthen our dedication to wellness because everyone deserves the chance to enjoy a longer, healthier life. LLUH is rooted in promoting wholeness and our Community Benefit investments are designed to support the community needs. The initiatives and programs include understanding the community health status and the built environment for our health system's readiness to meet the needs of our community.

Our Community Benefit Objectives include:

- Improving access to health services.
- Enhancing the role of public health in health care services.
- Serving those who live in poverty or other vulnerable populations.
- Promoting and enhancing community building activities.
- Committing to community health improvement throughout the organization.

*Transforming lives through education, health care
and research*



Dear Community Members,

Loma Linda University Health (LLUH) is no coincidence. From inauspicious beginnings, our organization has grown and flourished only because of a long succession of challenges overcome and providential leading. After more than a century, our vision is clearer and more focused than ever. Health care in the United States is just starting to move from a disease focus to a wellness focus. As the organization seeks to fulfill its mission of “continuing the teaching and healing ministry of Jesus Christ,” more miracles will be needed, and we believe they will take place. In conjunction with Vision 2020, we continue to implement innovative strategies to meet the needs of our community. Even with immense change, the goal of LLUH remains the same – to be an example for the way patients are cared for and students are taught, in an effort to help people live longer, healthier lives.

At LLUH, our commitment to wholeness goes beyond our jobs; it shows how we “Live It”. Loma Linda University Health believes in addressing community needs from a population health standpoint to transform the health of our community. These community benefit and community health investments need to be combined with a focus on improving health outcomes, shared responsibility from community partners, careful financial stewardship and measurable objectives to ensure continued improvement in our community’s health. We continue to make concerted efforts to shift our investments to more community-based preventive interventions, rather than relying mostly on charity care in our emergency departments or hospitalizations for the increasing advanced and unmanaged chronic health conditions. Together we will prioritize our health concerns, providing wellness and opportunity for all in our region.

Richard Hart, MD, DrPH
President
Loma Linda University Health

Kerry Heinrich, JD
Chief Executive Officer
Loma Linda University Medical Center

“Inland Empire to grow to 7.2 million people in the next 30 years” – The Press-Enterprise (May 21, 2017)

Inland Empire is situated about 60 miles inland from the Los Angeles metropolitan area and the Pacific Ocean.

San Bernardino and Riverside County Health Rankings

Published online at countyhealthrankings.org, the rankings help counties understand what influences the health of its residents and how long they will live. The rankings are unique in their ability to measure the current overall health of nearly every county in all 50 states. They also look at a variety of measures that affect the future health of communities, such as high school graduation rates, access to healthy foods, rates of smoking, obesity and teen births. Communities use the rankings to help identify issues and opportunities for local health improvement, as well as to garner support for initiatives among government agencies, health care providers, community organizations, business leaders, policy makers and the public.

Although there are a range of factors which are important for good health, every county has communities that lack both opportunities to shape good health and strong policies to promote health for everyone. As noted in the California County health ranking data, the Inland Empire communities will need to collaborate and strategize their efforts to improve the health factors and health outcomes of the community. LLUH’s goal is to bring people together to look at the many factors that influence health and opportunities to reduce health gaps. Also to select strategies that can improve health from a population health standpoint, and to prioritize strategies, programs and interventions that will address the social determinants of health to have a lasting impact.

About the Community We Serve

Loma Linda University Health’s primary service area can be defined, broadly, as California’s Riverside, San Bernardino and Ontario metropolitan areas. A home to over 4.5 million people, the Inland Empire is the 3rd most populous metropolitan area in the State of California and the 13th most populous metropolitan area in the United States.



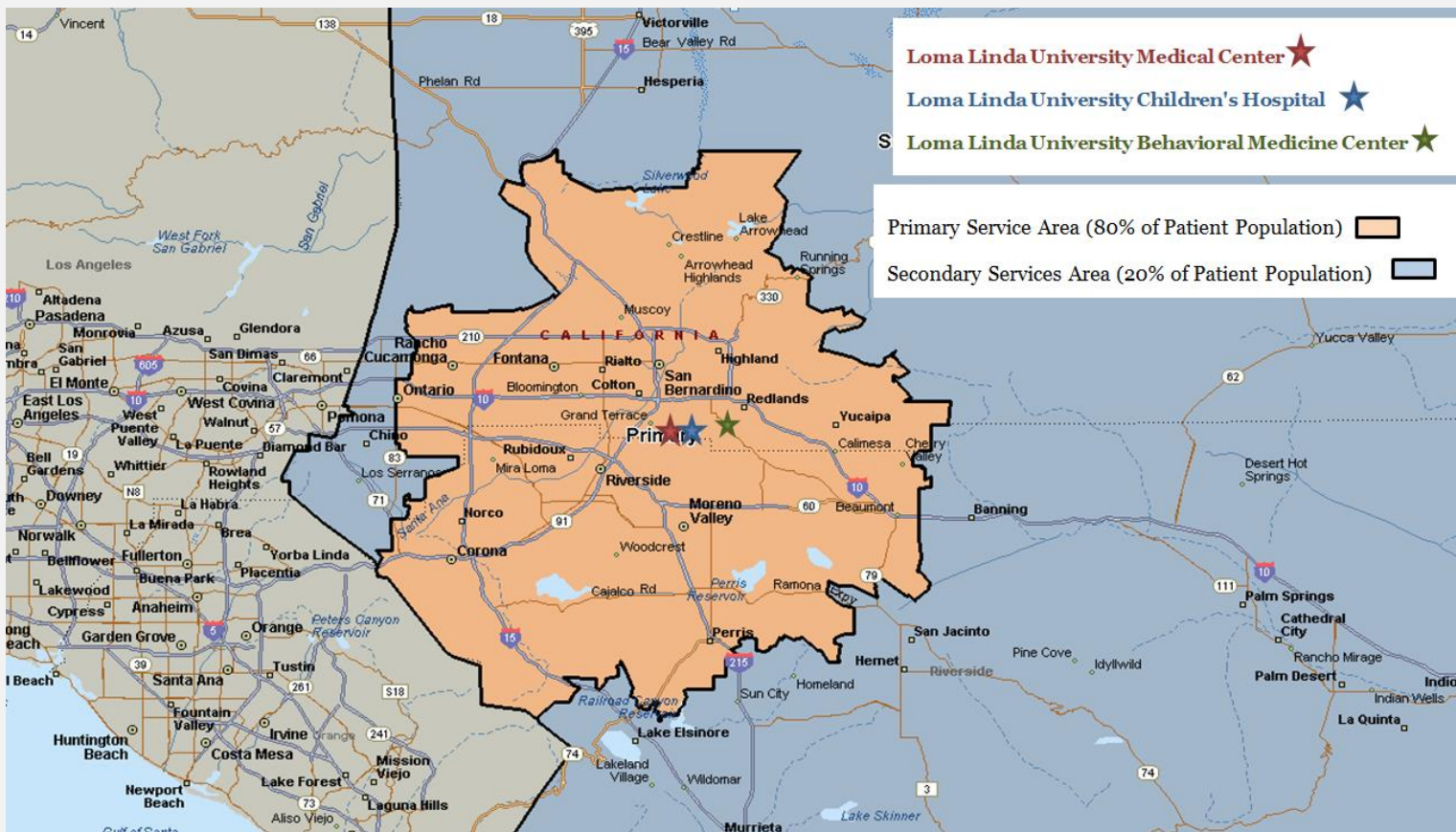
County Health Ranking (Total 58 Counties in California)	San Bernardino County				Riverside County			
	2014	2015	2016	2017	2014	2015	2016	2017
Health Outcomes	40	37	42	46	26	24	29	28
Length of Life	32	30	32	32	25	23	24	23
Quality of Life	48	50	49	52	38	38	42	41
Health Factors	45	47	47	45	38	39	39	40
Health Behaviors	44	44	41	39	34	32	33	34
Clinical Care	50	52	52	50	48	48	47	47
Social and Economic Factors	39	36	41	34	31	29	32	28
Physical Environment	53	53	57	55	48	49	56	56

About Our Service Area

Average
Household
Income SB County
\$76,354

Loma Linda University Health System combined, is a 1,071 hospital beds system. State of the art patient care is available for community members and international patients between Loma Linda University Medical Center (LLUMC), Loma Linda University Children's Hospital (LLUCH), Loma Linda University Behavioral Medicine Center (LLUBMC), Loma Linda University Medical Center East Campus (LLUMCEC), Loma Linda University Surgical Hospital (LLUSH) and Loma Linda University Medical Center – Murrieta (LLUMC – M). LLUMC is the only Level 1 Regional Trauma Center for Inyo, Mono, Riverside and San Bernardino counties.

LLUMC, LLUCH & LLUBMC Service area



POPULATION BY RACE/ETHNICITY

Race/Ethnicity	Race/Ethnicity Distribution		
	2016 Pop	% of Total	USA % of Total
White Non-Hispanic	608,923	25.8%	61.3%
Black Non-Hispanic	193,905	8.2%	12.3%
Hispanic	1,325,422	56.1%	17.8%
Asian & Pacific Is. Non-Hispanic	171,383	7.3%	5.4%
All Others	62,849	2.7%	3.1%
Total	2,362,482	100.0%	100.0%

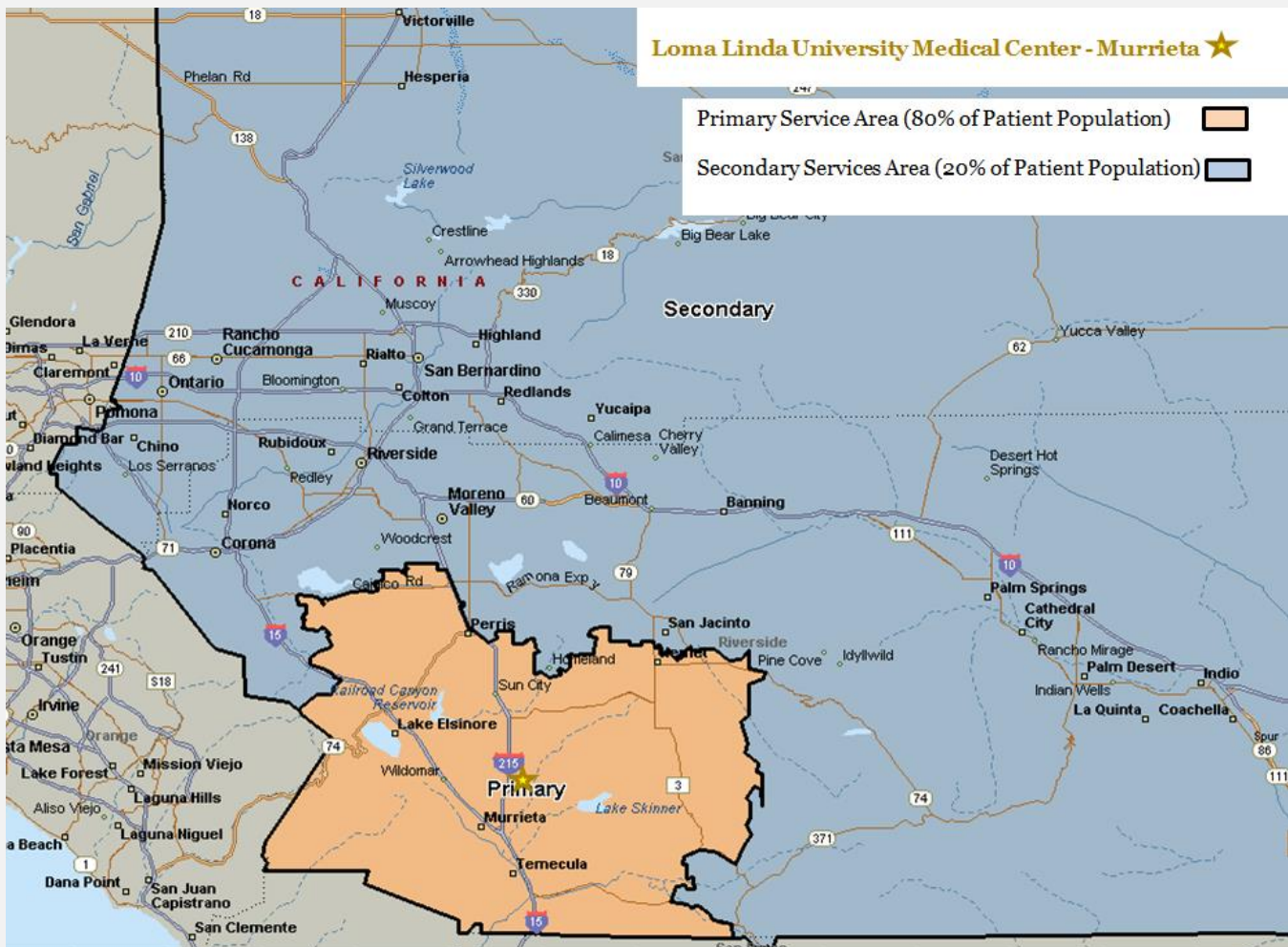
Each year, the LLUH system admits more than 47,740 inpatients and serves roughly 807,440 outpatients. LLUH includes the geographic area where the hospitals offer their free and under-reimbursed services in an effort to improve population health and quality of life.

LLUMC – Murrieta Service Area

Average
Household
Income RI
County \$75,934

POPULATION BY RACE/ETHNICITY

Race/Ethnicity	Race/Ethnicity Distribution		
	2016 Pop	% of Total	USA % of
White Non-Hispanic	319,981	46.1%	61.3%
Black Non-Hispanic	36,262	5.2%	12.3%
Hispanic	260,258	37.5%	17.8%
Asian & Pacific Is. Non-Hispanic	48,574	7.0%	5.4%
All Others	28,810	4.2%	3.1%
Total	693,885	100.0%	100.0%



Total Licensed Beds: 1,071

Inpatient Visits: 47,579

Outpatient Visits: 1,504,470

Emergency Department Visits:
117,002

Faculty Physicians at School of
Medicine: 865

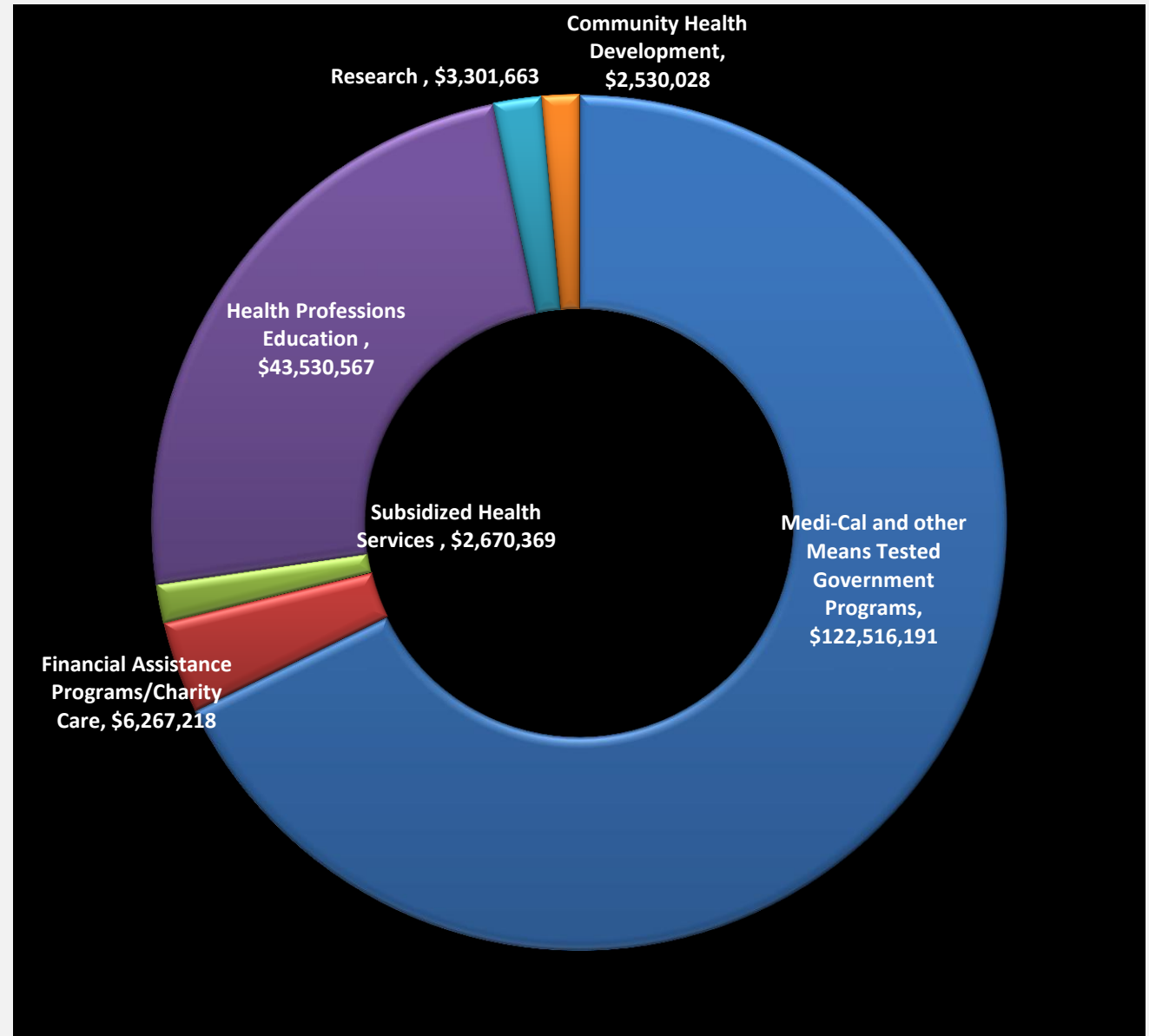
Accredited Residency Programs: 26

Accredited Fellowship Programs: 28

Number of Students at Loma
Linda University: 4,444

Number of Employees: 15,400

2016 COMMUNITY BENEFIT: LOMA LINDA UNIVERSITY HEALTH



LOMA LINDA UNIVERSITY HEALTH NET COMMUNITY BENEFIT ECONOMIC VALUE (FY 2016): \$180,816,036

COMMUNITY BENEFIT	LLUMC (MC + EC +SH)	LLUCH	LLUBMC	LLUMC - Murrieta	LLUH		
Reporting Period: January 2016 - December 2016	Net Benefit	Net Benefit	Net Benefit	Net Benefit	Expenses	(Offsets)	Net Benefit
Patient Care Services	\$70,181,620	\$48,273,316	\$2,514,856	\$10,483,986	\$704,102,955	(\$572,649,177)	\$131,453,778
1) Medi-Cal and Other Means tested Government Programs	\$62,215,905	\$47,657,341	\$2,464,978	\$10,177,967	\$691,518,320	(\$569,002,129)	\$122,516,191
MediCal	\$59,251,153	(\$18,774,466)			\$475,127,874	(\$434,651,187)	\$40,476,687
SCHIP & CCS	\$2,964,752	\$65,815,832			\$182,110,214	(\$113,329,630)	\$68,780,584
2) Financial Assistance Program/ Charity Care	\$5,295,346	\$615,975	\$49,878	\$306,019	\$6,268,072	(\$854)	\$6,267,218
3) Subsidized Health Services (Home Care)	\$2,670,369				\$6,316,563	(\$3,646,194)	\$2,670,369
Health Professions Education	\$43,036,156	\$494,411			\$52,491,382	(\$8,960,815)	\$43,530,567
1) Medical Residents, Fellows & Interns	\$41,686,247				\$51,141,473	(\$8,738,569)	\$41,686,247
2) Paramedical Education (Pharmacy & Chaplain Residencies) & Other	\$1,349,909				\$1,349,909	(\$222,246)	\$1,349,909
Research (Offsets Included)	\$1,113,208	\$2,188,455			\$3,301,663		\$3,301,663
1) Clinical Trials							
2) Community Health Research							
Community Health Development (Offsets Included)	\$1,620,467	\$825,060	\$18,895	\$65,607	\$2,530,028		\$2,530,028
1) Community Health Services (SACHS, Transportation and Care Management)					\$1,932,981		
2) Cash and In-Kind Donation					\$234,626		
3) Community-Building Activities and Programs (PossAbilities, Health & Resource Fairs)					\$245,453		
4) Community Benefit Operations					\$116,968		
TOTAL	\$115,951,451	\$51,781,242	\$2,533,751	\$10,549,593	\$762,426,028	(\$581,609,992)	\$180,816,036

*LLUMC (Cost to Charge Ratio - 20.87%); LLUCH (Cost to Charge Ratio - 19.43%); LLUMC - Murrieta (Cost to Charge Ratio - 21.65%)

“We continue to support the organization’s goal to care for the health of our community” - Trevor Wright,
MHA – Chief Operating Officer

64.1% of RI County and
69.5% of SB County
students are eligible to
receive free or reduced
price school meals –
kidsdata.org, 2015

Our Community Benefit Program

At Loma Linda University Health, our commitment to caring for the mind, body and spirit is part of everything we do. We are combining our education, clinical care and research programs to fulfill our mission — making man whole. Together, we'll continue to strengthen our dedication to wellness because everyone deserves the chance to enjoy a longer, healthier life.

PATIENT CARE SERVICES

LLUH is committed to providing patients with the very finest possible medical care. It is important that we have a strong understanding of the community we serve and health conditions that are of greatest concern in, and to, the community. In addition, our community benefit patient care services program offers free or low-cost coverage for those children and/or adults with limited resources. (Net Benefit: The amount accounted for as community benefit is done as a post- adjustment for all revenue streams towards the allowable patient care services.)

1. Medi-Cal and other Means tested Government Sponsored Programs:

a. Medi-Cal

Medi-Cal offers low-cost or free health coverage to eligible Californian residents with limited income.

Covered California is the state's health insurance marketplace where Californians can shop for health plans and access financial assistance if they qualify. Medi-Cal covers low-income adults, families with children, seniors, persons with disabilities,



pregnant women, children in foster care and former foster youth up to age 26.

b. State Children's Health Insurance Program (SCHIP)

The Children's Health Insurance Program (CHIP) is a partnership between the federal and state governments that provides health coverage to uninsured children whose

families earn too much to qualify for Medicaid, but too little to afford private health coverage. Benefits vary by state and by the type of CHIP program, but all states provide comprehensive coverage, like immunizations and well-baby/well-child care, at no cost. The federal government establishes general guidelines for the administration of CHIP benefits. Eligibility depends on your income, the number of people in your family and the rules in your state. In almost every state, children in families with income up to 200 percent of the federal poverty level (\$48,500 per year for a family of four) are covered. In more than half the states, the income eligibility for children can be even higher.

c. California Children's Services

California Children's Services (CCS) is a state program for children with certain diseases or health problems. Through this program, children up to 21 years old can get the health care and services they need. CCS will connect you with doctors and trained health care providers and professionals who know how to care for your child with special health care needs. Examples of CCS-eligible conditions include, but are not limited to, chronic medical conditions such as cystic fibrosis, hemophilia, cerebral palsy, heart disease, cancer, traumatic injuries, and infectious diseases producing major sequela. CCS also provides medical therapy services that are delivered at public schools.



2. Financial Assistance Program/Charity Care

Charity Care is defined as any medically necessary inpatient or outpatient hospital service provided to a patient who has an income below 200% of the current federal poverty level and who has established qualification in accordance with requirements contained in the LLUH Charity Care/Discount Payment Policy.

3. Subsidized Health Services

Discount Payment through the Subsidized Health Services is defined as partial charity care which results from any medically necessary inpatient or outpatient hospital service provided to a patient who is uninsured or whose insurance coverage does not otherwise provide a discount from the usual and customary rates of LLUMC; and 1) desires assistance with paying their hospital bill; 2) has an income at or below 350% of the federal poverty level; and 3) who has established qualification in accordance with requirements contained in the LLUMC Charity Care/Discount Payment Policy.

Over 600 Medical
Residents and 90 fellows
trained annually

HEALTH PROFESSIONS EDUCATION

At Loma Linda University Health, our experienced health care professionals are committed to helping health professions residents and interns succeed in their graduate medical education. Students (Medical Interns and Residents, Pharmacy, Chaplaincy and Allied Health Professions) are offered diverse clinical experiences and guide you through a collaborative learning environment where you are

challenged to find ways to improve patient care.

The residency programs give students the unique opportunity to learn at the only Level 1 Trauma Center in San Bernardino County and the Inland Empire. Our Children's Hospital has the only Level 3 Neonatal Intensive Care Unit (NICU) in the region and is the only area facility

equipped to provide pediatric transplants in Southern California. Residents and students receive comprehensive education and an opportunity to participate and /or observe clinical trials and medical simulation laboratory. Our Medical Simulation Center (MSC) is one



example of how we combine technology and practical clinical simulations to create a compressive learning experience to enhance patient safety, quality of patient care, and inter-professional healthcare provider education. The MSC provides:

- An adequately staffed, appropriate, professional, and cohesive team
- A leadership role in providing best practices in simulation methodology
- Proactive standardized processes in providing quality simulation learning experiences

RESEARCH

The world-renowned scientists at Loma Linda University are striving to advance the understanding and care of human health in order to fulfill the institution's mission "to make man whole." The office for Research Affairs facilitates and promotes high quality research conducted at Loma

Linda University, Loma Linda University Medical Center and all affiliated entities. We partner with the research community at Loma Linda University to develop a shared responsibility for the ethical conduct of research and compliance. Our research program is an integral part of learning and community health development investments. The institution is dedicated to growing and investing in clinical research and community health research.



1. Cancer Center – Clinical Trials and Research

The primary focus of Oncology Clinical Research at LLUCC is to help educate patients and physicians of the treatment options through clinical research.

The Clinical Research Coordinators and physicians work together with the departments of Radiation Medicine, Medical Oncology, Surgical Oncology, Pediatric Oncology, Palliative Care and Home Health Services to provide patients with treatment and supportive services during their disease process.

For More Information Please Visit Our Cancer Center Website: <http://cancer-center.lomalindahealth.org/clinical-trials-and-research#trials>

Total of 112
Research Programs
at LLUH in 2016

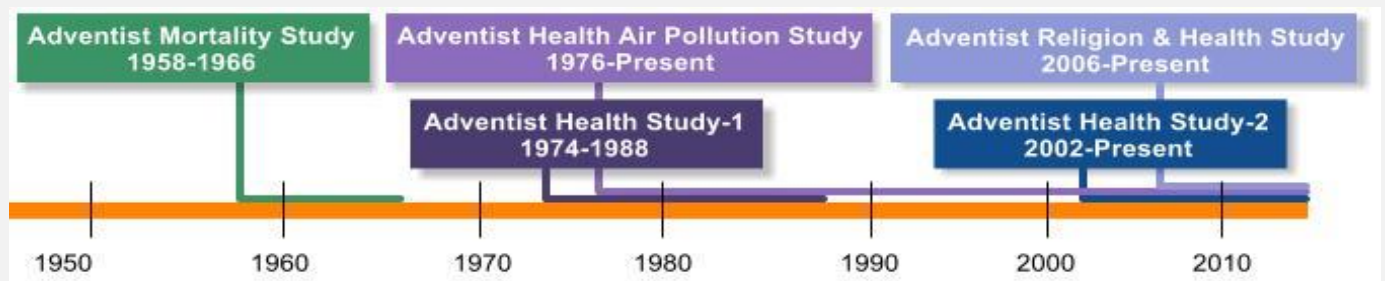
2. Community Health Research

With the mission to serve and enhance the health of our communities, our research activities are strategically designed to focus on reducing health disparities, improving health and promoting wholeness in the region. We achieve this by fostering academic and community-based partnerships that help and support our research endeavors. Our institution is committed to continue working with community members and organizations and forming partnerships in

these research efforts. One such example is the “Adventist Health Studies (AHS)”, which is a series of long-term medical research projects of Loma Linda University with the intent to measure the link between lifestyle, diet, disease and mortality.

Loma Linda Blue Zone and Adventist Health Study Research

The Adventist heritage of Loma Linda University shaped the research in the School of Public Health. Adventists' support of a healthy lifestyle has helped to change the eating habits of Americans over the decades. In 1800s Battle Creek, Michigan, Adventists introduced breakfast cereals and peanut butter and recommended an ovo-lacto-vegetarian diet. In another case, when the American Dietetic Association had branded the vegetarian diet as nutritionally inadequate, research published by the Loma Linda University School of Public Health proved that all required nutrients were present in a balanced vegetarian diet. A long history of nutritional research at Loma Linda University has addressed the elements of a balanced vegetarian diet and the health benefits of various vegetarian diets.



COMMUNITY HEALTH DEVELOPMENT

1. Community Health Improvement Services

a. Support to Community Health Services

SAC Health System (SACHS) is a non-profit community healthcare corporation serving the Inland Empire. The clinics provide affordable health care services for all, but primarily serve uninsured patients and their families. They accept Medi-Cal and Medicare, and offer many federal, state and local programs to those who qualify. For those who are ineligible for programs, they offer a sliding fee scale based upon income.

History of SACHS

Social Action Corps (SAC) began in the late 1960s as an outreach effort from students and staff at Loma Linda University and Medical Center. Over the course of 30 years these volunteers offered temporary medical clinics in donated spaces within the community. Early 1990's – SAC began to look for a permanent location and by 1992 Norton Air Force Base was closing and provided an opportunity for SAC to acquire a medical facility. SAC incorporated into a 501(c) (3) community health care corporation and became SACHS with a three clinic system of community clinics in the City of San Bernardino. SACHS receives Teaching Health Center Graduate Medical Education Program designation for Family Medicine, Pediatrics and Psychiatry resulting in one of the nation's largest programs. In 2015, SACHS acquired the Federal Qualified Health Center Status.

b. Whole Care Services

Whole Aging Care

A whole aging care model will engage with multiple stakeholders across the region in order to promote healthy living and aging through preventive health programs, reduction of disparities in education and access, and creation of healthy community initiatives for sustainable healthy aging, serving as an adaptable model for the national stage.

- Interventions
 - Just for Seniors

Whole Behavioral Health Care

Behavioral health is essential to personal well-being, family and interpersonal relationships, the ability to contribute to community or society, and the



ability to adapt to change and to cope with challenges. It plays a major role in a person's ability to maintain good physical health. Behavioral illnesses, such as depression and anxiety, affect people's ability to participate in health-promoting behaviors. Behavioral disorders contribute to a host of problems that may include disability, pain, or death. The resulting burden of mental illness is among the highest of all diseases.

Loma Linda University Health (LLUH), as a faith-based healthcare leader, understands that faith is a strong component of health. Participation in a community of faith significantly improves the likelihood for congregation members of becoming healthy and staying healthy. At the intersection of faith and health are communities who value healing the whole person. It is a well-established fact that clergy are the first line of treatment for mental health. Loma Linda University Medical Center and the Behavioral Medicine Center are addressing the mental health needs in surrounding communities through partnerships with Loma Linda University academic departments, such as the Department of Psychiatry. The goal of these partnerships is to help faith communities to redefine themselves as 'health centers,' where the whole person is treated: emotionally, spiritually, relationally, and physically.

- Interventions
 - Amyotrophic Lateral Sclerosis (ALS) Support Group
 - Chemical Dependency Support Group and Educational Forms
 - Mental/Behavioral Health Education and Awareness
 - Senior Behavioral Health Services
 - Behavioral Health Fairs

Whole Cancer Care

The cancer objectives for Healthy People 2020 support monitoring trends in cancer incidence, mortality, and survival to better assess the progress made toward decreasing the burden of cancer in the United States. The objectives reflect the importance of promoting evidence-based screening for cervical, colorectal, and breast cancer by measuring the use of screening tests. For cancers with evidence-based screening tools, early detection must include the continuum of care from screening to appropriate follow-up of abnormal test results and referral to cancer treatment. At LLUH we are committed to treating interrelated factors that contribute to the risk of developing cancer. These same factors contribute to the observed disparities in cancer incidence and death among racial, ethnic, and underserved groups.

- Interventions
 - Cancer Health Fairs
 - Cancer Outreach Events
 - Cancer Screenings
 - Cancer Support Groups
 - Cancer Walk
 - Cancer Support Services

Whole Child Care

Children are our most at risk population in the Inland Empire as they are the smallest voice in a region of minimal resources. In our vast geographic area, children 0-17 compromise more than 39 percent of our population, 33 percent of our families live at poverty level, and 44 percent live in single parent households. Our children attend schools where educational competency rates are below the

national average, yielding high school graduation rates of 60 percent. Our mission at Loma Linda University Health is to be the voice for our most vulnerable population. We have made children's well-being a priority for our health system, by being the premier Children's



Hospital in the eastern portion of Southern California.

Meeting the health needs of our children will require a symphony of care and coordinated response from healthcare access, access to nutritious foods, family support, access to open space for physical activity, and collaboration with our local schools. Most strategies to prevent or reduce childhood obesity have focused on individual behavior modification and pharmacological treatment, but have been met with limited success. Loma Linda University Health recognizes that our children are our future. LLUH is committed to improving the health of all children living in the region by promoting lifelong healthy eating patterns through education and behavior change practices, promoting physically active lifestyles, and supporting community programs that promote overall health.

- Interventions
 - Breastfeeding Education for Non-patients
 - Camp Good Grief
 - Children and Family Health Fairs
 - OK KIDS – Health4Life, Operation Fit, Youth Hope, Safe Kids
 - Youth Alternative Solutions

Whole Chronic Disease Management

The prevalence of chronic diseases is increasing in both the elderly and non-elderly populations, with a significant increase in the number of people with multiple chronic diseases. Increased spending on chronic diseases in Medicare is a significant driver of the overall increase in Medicare spending over the last twenty years. LLUH is taking an active role to improve the continuum of care for individuals experiencing chronic disease and is committed to an overall

emphasis of improving the efficiency of health care and bridging preventive strategies in the clinical setting as well as in the community.

- Interventions
 - Charity Medications
 - Community Clinic Support
 - Community Support/Watch Groups
 - Diabetes Monthly Support Group
 - Diabetes Blood Screenings
 - Diabetes Treatment and Prevention
 - Community Health Workers or Promotores de Salud
 - Heart Health Education
 - Heart Health Prevention Education
 - Heart Health Screening
 - Heart Health Wellness Fairs

Whole Rehabilitation Care

LLUMC East Campus recognizes that this (people with disabilities) disenfranchised population in need is often left without resources or support, for dealing with the many adjustments they must make physically, mentally, and emotionally in order to have fulfilling lives. The mission is to provide a new direction and hope through physical, social, educational and spiritual interaction with peers and their community.

- Interventions
 - PossAbilities

Whole Sickle Cell Anemia

Sickle cell disease (SCD) is a real disease with real consequences – appropriately termed “crisis”. Symptoms of this inherited disease begin in early childhood and vary in severity, leading to consequences of frequent hospitalizations, disability, and early death. We will form partnerships with interested parties in an effort to increase awareness and

engage the community so that our efforts may be multiplied. In the end, the Patient and those surrounding them that are affected by this illness will be the passion of our work.

- Interventions
 - Sickle Cell Education Series
 - Sickle Cell Fair



Faith and Health

Faith Communities and Healthcare Systems are often pillars in the community, places we turn in our greatest hours of need. In the Inland Empire we are surrounded by significant and often stark health disparities. Healthcare is often used, and perceived, as only a safety net for the forgotten and underserved. Community members travel through our system without a continuum of care that empowers them to rise above the barriers of broken systems and neighborhoods. Many of our community members struggle to meet their basic needs on a daily basis, and when their basic needs go unmet they often look to Faith Communities for support.

The Faith and Health Initiative is an effort to be a better companion to Faith Communities in ministering to and caring for community. It seeks to bridge the gap that exists between the well-intentioned services of Healthcare Systems, and achieving a lifelong journey of health. It makes sense that these two healing institutions should work together in order to create new forms of faith-based collaborations for health in our communities. The Faith and Health Initiative is embedded into the mission of Loma Linda University Health, and therefore becomes a true delivery model for Christ's ministry of teaching and healing. Faith Communities have a significant footprint, and become the ideal companion in being faithful to, and delivering, our value of Wholeness.

- Interventions
 - Clergy Collaboration and Appreciation
 - Faith and Health Initiatives and Counseling

2. Cash Sponsorships and In-Kind Donation

LLUH is committed to supporting Community-based Organizations with our Cash and In-Kind donation program to empower and build capacity at these organizations. Our contributions to annual resource fairs, health



initiatives, health fairs and community programs are strategically designed to help and serve the in-need members of our community. In-Kind services include hours contributed by staff to the community while on health care organization work time, the cost of meeting space provided to community groups and the donations of food, equipment, and supplies.

3. Community-Building Activities and Programs

Education and Workforce Development

Community Health Workers

Integration of the Community Health Workers in health, public health and community support settings is an innovative approach to broaden the scope of services and links to strengthen community-based disease prevention. The community-centered settings in which services are delivered, and the workforce resources to deliver such services, offer considerable potential to improve and address the social determinants of health, improve long-term health outcomes and lower health care costs. California Health Workforce Alliance's (CHWA's) definition of a Promotores –Community Health Worker (CHW) is a person who is a trusted member of and/or who has an unusually close understanding of the community served in the delivery of health related services through either working directly with providers or their partner organizations in the community being served. The CHWs play a crucial role in connecting the community to various health and social services and also helps the health care organization in achieving the Institute for Healthcare Improvement's Triple Aim objectives (Population Health, Experience of Care and Reducing Per Capita Cost).



Community Health Workers have demonstrated the ability to play a crucial role as a member of the primary care team, and can help to connect the community to clinical services, help patients navigate the health care system and implement population health improvement strategies. The Loma Linda University Health – Institute for Community Partnerships: Promotores (CHW) Academy provides systematic education programs that train, certify and prepare CHWs to join the community workforce in population health management. Following the completion of the basic CHW certification, they have the opportunity to complete specialty areas of training. To achieve this added value and promise, the LLUH - Promotores (CHW) Academy offers specialty training in Clinical Care, Behavioral Health, School-based Clinics and Community Health Development, and is geared to address the objectives of triple aim and the most urgent community health needs. After the basic CHW training, CHWs are often engaged as CHW Case Workers, CHW Outreach Workers, Health Educators, Promotores, Patient Navigators and Enrollment Specialists (CHWA study, 2013). The specialty training programs provide a CHW with the more advanced knowledge and expertise to more effectively and competently address

the most at-risk patients and/or high risk populations with the much needed support lying outside the health care systems.

The approach also closely aligns with the mission, vision and goals of LLUH. Over 80 community members received their certification at the LLUH – Promotores Academy in 2015-2016. The certification has provided them with the support and tools to better assist the community members and also support their professional development.



Other Health Professions Development Programs

The San Manuel Gateway College is the first of its kind in the United States. The college will integrate training programs in health careers with clinical experience, allowing students to benefit from hands-on training and mentoring by Loma Linda University Health faculty and students. These six- to 18-month health career certificate programs will provide job entry skills, employment and college credit for students who elect to further their education.

- Certified Nursing Assistant
- Dialysis tech
- Medical Assistant
- Pharmacy tech
- Surgical Tech

“Our plans for Education and Workforce Development are strategic approaches to empower our community and build a sustainable and better healthier future.” – Juan Carlos Belliard, PhD, MPH – Director, LLUH Institute for Community Partnerships

LLUMC Licensed beds:

Medical Center: 371

East Campus: 134

Surgical Hospital: 28

Over 71,000
Emergency
Department, 21,600
Inpatient and 666,600
Outpatient visits at
LLUMC

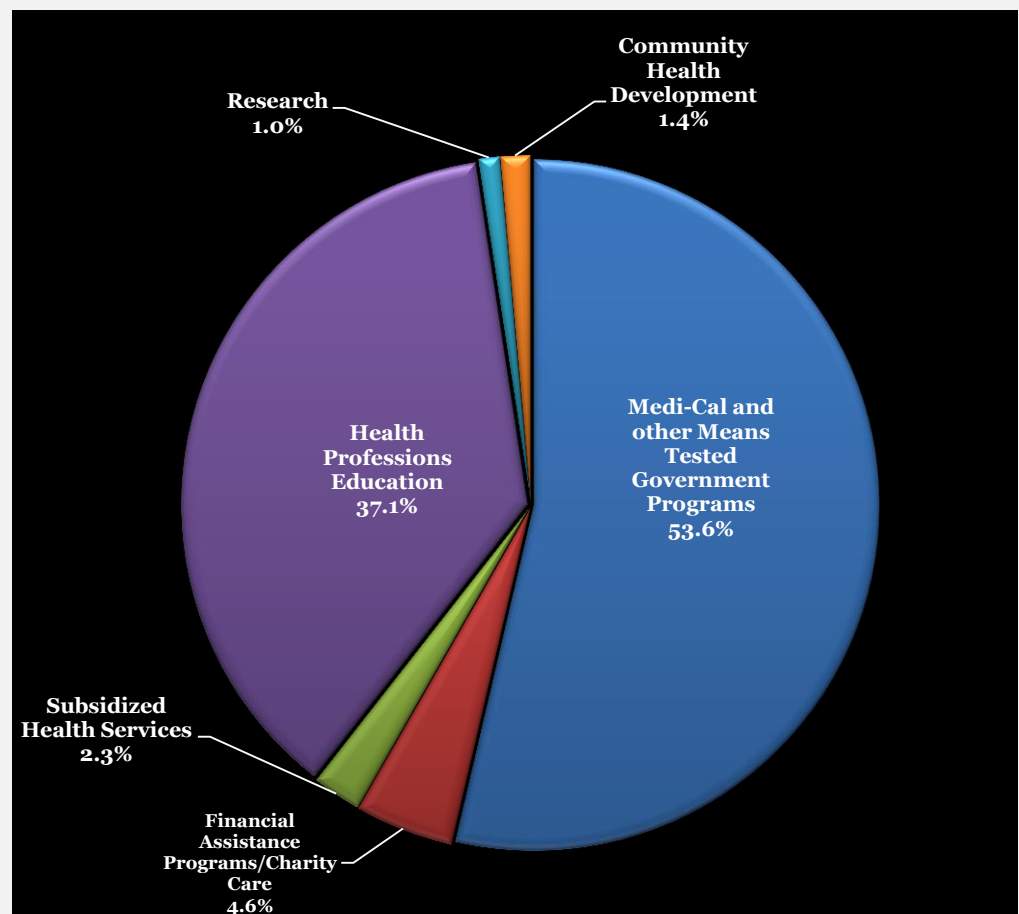
Over 90 Community
Benefit Programs and
Events

~22,000 Staff Hours
and ~10,500
Volunteer Hours
towards Community
Health Programs

~200,000 individuals
served with
Community Benefit
Programs

2016 Community Benefit: Loma Linda University Medical Center (LLUMC)

Community Benefit - 2016 (LLUMC)	Net Community Benefit Economic Value (\$)
Medi-Cal and other Means Tested Government Programs	\$62,215,905
Financial Assistance Programs/Charity Care	\$5,295,346
Subsidized Health Services	\$2,670,369
Health Professions Education	\$43,036,156
Research	\$1,113,208
Community Health Development	\$1,620,467
TOTAL	\$115,951,451



LLUMC 2016 Community Health Development Selected Program Highlights

- Funding Health and Wellness Services at Social Action Community Health System (SACHS):** SAC Health System is a non-profit community healthcare corporation serving the Inland Empire. The clinics provide affordable health care services for all, but primarily serve uninsured patients and their families. They accept Medi-Cal and Medicare, and offer many federal, state and local programs to those who qualify. For those who are ineligible for programs, they offer a sliding fee scale based upon income.

Family Medicine:

Family Medicine team is dedicated to provide you and your family with information to help you stay healthy. SACHS provides vital preventive treatments such as well adult and child care, reproductive care, vaccines, and cancer screening.

Behavioral Health:

SACHS Behavioral Health Services assists individuals, couples, and families confronted with behavioral and mental health issues and the daily stresses of life. A dedicated team of psychologists, psychiatrists, and licensed clinical therapists, as part of the over-all integrative healthcare team at SACHS, are committed to meeting the behavioral and mental health needs of our community.

Dental Services:

Comprehensive Oral Health Care Services for the families in the Inland Empire including neighboring counties.

2016 Patient Encounters at SACHS:

Behavioral Health: 3,858

Dental: 9,936

Family Medicine: 16,023

Number of Medi-Cal
Patients seen 2016: 17,594

Number of Uninsured
Patients seen 2016: 1,174



Services include:

- Diagnostic & Preventive Care
- Emergency Dental Services
- Basic Dental services including Restorative, basic Endodontic, Periodontal and Oral Surgery (routine extractions)
- Other rehabilitative services such as dentures, partials, crown & bridge and other elective oral surgical procedures.

Community Resource Center:

SACHS Community Resource Center (CRC) supports access to health care and encourages the physical, emotional, and spiritual health of families in the Inland Empire. Services and referrals include assistance for food, clothing, utilities, rent, housing, health, and various other needs.

2. The Summer Gateway Program: A Health Professions Pipeline Program

The Summer Gateway program is a two-week summer program for underserved youth, mostly high school students, that includes speakers and activities, with an optional third week where interested students can shadow health professionals in the workplace. The program provides training in how to take the SAT, apply for financial aid, and improve study skills so students understand a college education is attainable. Speakers from all the health sciences schools at Loma Linda University offer instruction and hands-on activities for students to learn more about different health sciences career opportunities.

At LLU our mission is “to make man whole,” so our Summer Gateway program not only offers academic and career guidance, but also includes spiritual activities, physical activity, healthy meals, and team building activities to address the needs of the whole person.



Previously, we ran three separate pipeline programs that each focused on a different ethnic group. The Loma Linda University Institute for Community Partnerships will now offer one program that brings students of different ethnicities together in an environment where we can foster understanding and collaboration amongst youth of different backgrounds.

3. Clinical Community Health Worker Scholarships

Our 2016 CHD program provided full or partial scholarships to community health workers (CHWs) to pursue training and skill development in Clinical Community Health Workers at the “Promotores Academy”. The CHW 201 specialty training program prepares CHWs to function as members of a clinical care team, in both inpatient and outpatient settings, with a case



management approach to patient care. Topics include: organizational culture, HIPPA, basic medical terminology and clinical assessment, home visitation, patient navigation and service/care coordination, motivational interviewing and goal setting.

“Being a community health worker allowed me to grow personally and develop abilities and skills that I would have not imagined possessing before. During my personal growth and the training, I realized that I could provide so much and truly help my community” Lorena Sifuentes, CHW

4. Partnerships and Stakeholders Support:

Our Community Benefit office supported the LLUH - Institute for Health Policy and Leadership initiative to host the “Diagnosis: Hunger”. The summit was co-sponsored by the “Root Cause Coalition” and “The Alliance to End Hunger”. Approximately 120 community leaders and members were in attendance of the event.

For more than 15 years, Hope through Housing Foundation has been working in collaboration with National Community Renaissance offering services, expertise, and coordination to inspire Hope, present Opportunity, generate Prosperity, and catalyze

“Negative impacts of hunger cost the nation about \$167.5 billion annually.” – Hunger Summit 2016

Empowerment for individuals of all generations. Their alliance (and lead) in the “Neighborhood Transformative Collaborative” helps the in-need community to enhance safety, improve public health resources and provide assistance towards hunger, financial empowerment, education and support other social determinants of health. LLUMC’s sponsorship of 500 grocery bags at the “NTC 2016 Holiday Health Resource Fair” is one of the examples how we continue to support our community organizations and actively participate in community initiatives.



“The Holiday Health and Resource Fair is an opportunity to bring much needed resources to Arrowhead Grove residents and the surrounding community. Hope through Housing Foundation looks forward to continued partnership with Loma Linda University and other partners to continue servicing the residents of this area.” - Sandra Espadas, Senior Director, Community Development, Hope Through Housing Foundation.

**LLUCH Licensed
beds:**

343

Over 13,400 Inpatient
and 80,000
Outpatient visits at
LLUCH

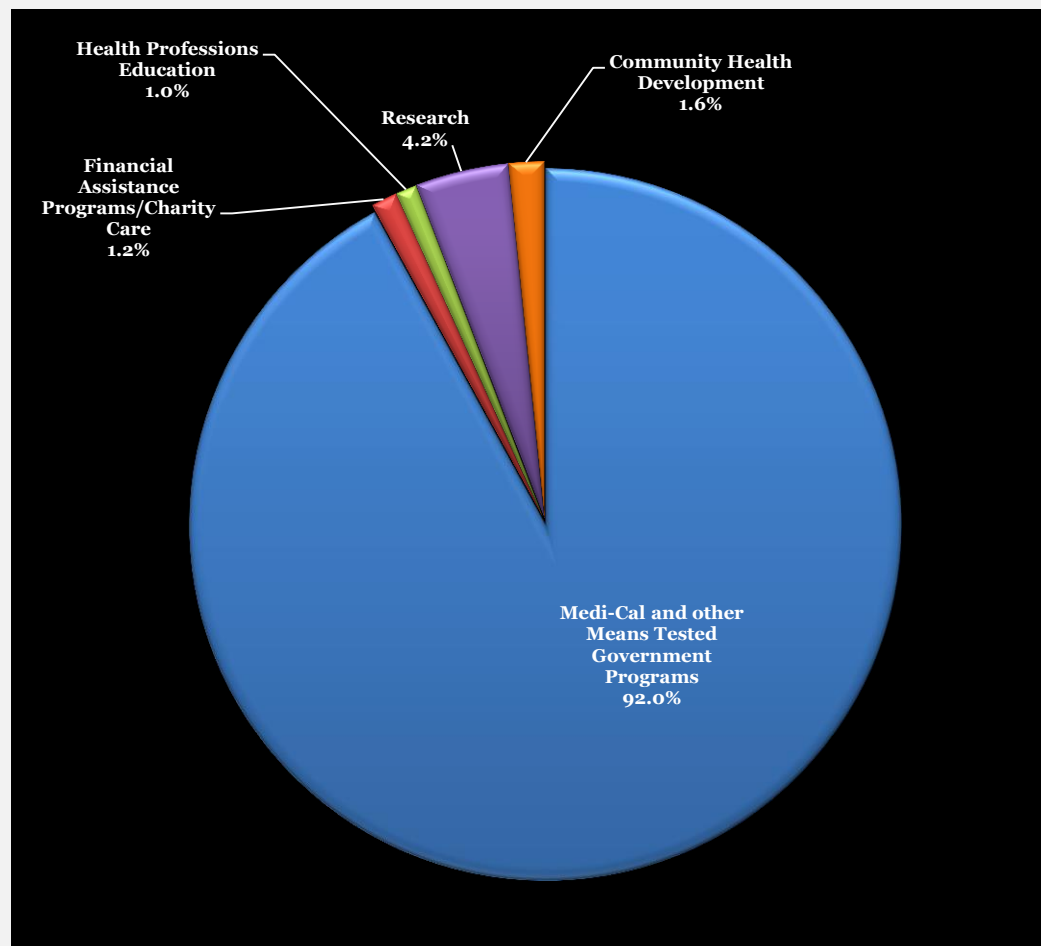
Over 113 Community
Benefit Programs and
Events

~2,000 Staff Hours
and ~2,500 Volunteer
Hours towards
Community Health
Programs

~75,000 individuals
served with
Community Benefit
Programs

**2016 Community Benefit: Loma Linda University
Children's Hospital (LLUCH)**

Community Benefit - 2016 (LLUCH)	Net Community Benefit Economic Value (\$)
Medi-Cal and other Means Tested Government Programs	\$47,657,341
Financial Assistance Programs/Charity Care	\$615,975
Health Professions Education	\$494,411
Research	\$2,188,455
Community Health Development	\$825,060
TOTAL	\$51,781,242



LLUCH 2016 Community Health Development Selected Program Highlights

1. Funding Health and Wellness Services at Social Action Community Health System (SACHS):

As part of our commitment to serve the needs of our community, the Children's hospital, too, provides support towards patient care services that help to maintain and enhance the health our community.

Pediatric Services

- Asthma care
- Behavior evaluations
- Dental services
- Immunizations
- Screenings: dental, hearing, lead, nutrition, tuberculosis, and vision
- School and sports physicals
- Sick care and injuries
- Teen health
- Teen reproductive health
- Well child care

Women's Health:

SACHS provides the highest quality of comprehensive and individualized women's medical care. Services include:

- Pelvic exams
- Pap smears and follow up procedures for abnormal results
- Clinical breast exams
- Mammogram referral
- STD testing/treatment
- Family Planning



2016 Patient Encounters at SACHS:

Pediatrics: 10,284

Women's Health: 3,353

Number of Community Members benefited from our Community Resource Center: 2,900

“SACHS is the second-largest teaching health center in the nation. Research shows that physicians trained in a community health center are three times as likely to stay working in community health throughout their careers.” Nancy Young, MHES, President and CEO of SACHS

2. Children's Day

Children's Day is an annual health education fair for young children and parents coordinated by the Child Life Department at Loma Linda University Children's Hospital. Each year, LLUMC, LLUCH, LLUEC, LLUBC, Loma Linda University, and community partners come and participate at the event. The purpose of Children's Day is to provide a non-threatening exposure to a medical setting for children ages 2-8 in our community.

3. Family Health Fair

Going on its 39th year, the Family Health Fair is an annual event that invites the community to come learn more about their health and to "Live it" through health screenings, flu shots, blood screenings, and informational booths. For the third year the event includes a 5K run/walk designed for everyone from casual walkers to elite runners. Each participant receives an event T-shirt and is eligible to win a race medal. After the 5K, the excitement continues with exhibits, opportunity drawings, delicious food, live entertainment, and all-around family fun.

4. OK KIDS-Operation Fit

Operation Fit is a week-long summer day camp for youth ages 9-15 and their families interested in learning about healthy eating habits and active living. Through a series of dynamic, interactive and educational activities, campers will gain the tools they need to make wholesome choices about food and physical activity. Each camper will also learn how to demonstrate those choices to their families and friends. Five to six week long camps are held each summer; one week is devoted to children with disabilities

5. OK KIDS-Safe Kids

Safe Kids Program is the Loma Linda chapter of the national organization with focuses on safety education of children and parent to reduce the avoidable death statistics. In childhood, accidents and unintentional injuries are ranked as the #1 cause of death in childhood.

6. OK KIDS-Youth Hope

Youth Hope Substance Abuse is a community drug prevention and intervention program for uninsured young adults that are homeless or with housing insecurity. This program is linked with the community based program of Youth Hope.

7. Youth Alternative Solutions Program

The Youth Alternative Services program services approximately 20 teens, predominately Hispanic and Caucasian males between the ages of 14-18 years old from Riverside and San Bernardino counties.

"One of our Community Health Investment goal encompasses innovating excellence in medical care and engage the neighboring communities, to promote Whole Person Care by addressing low literacy rates, reduced physical activity and food insecurity for low-income families and children." – Marti Baum, MD – Medical Director, Community Health

**LLUBMC Licensed
beds:**

89

**2016 Community Benefit: Loma Linda University
Behavioral Medicine Center (LLUBMC)**

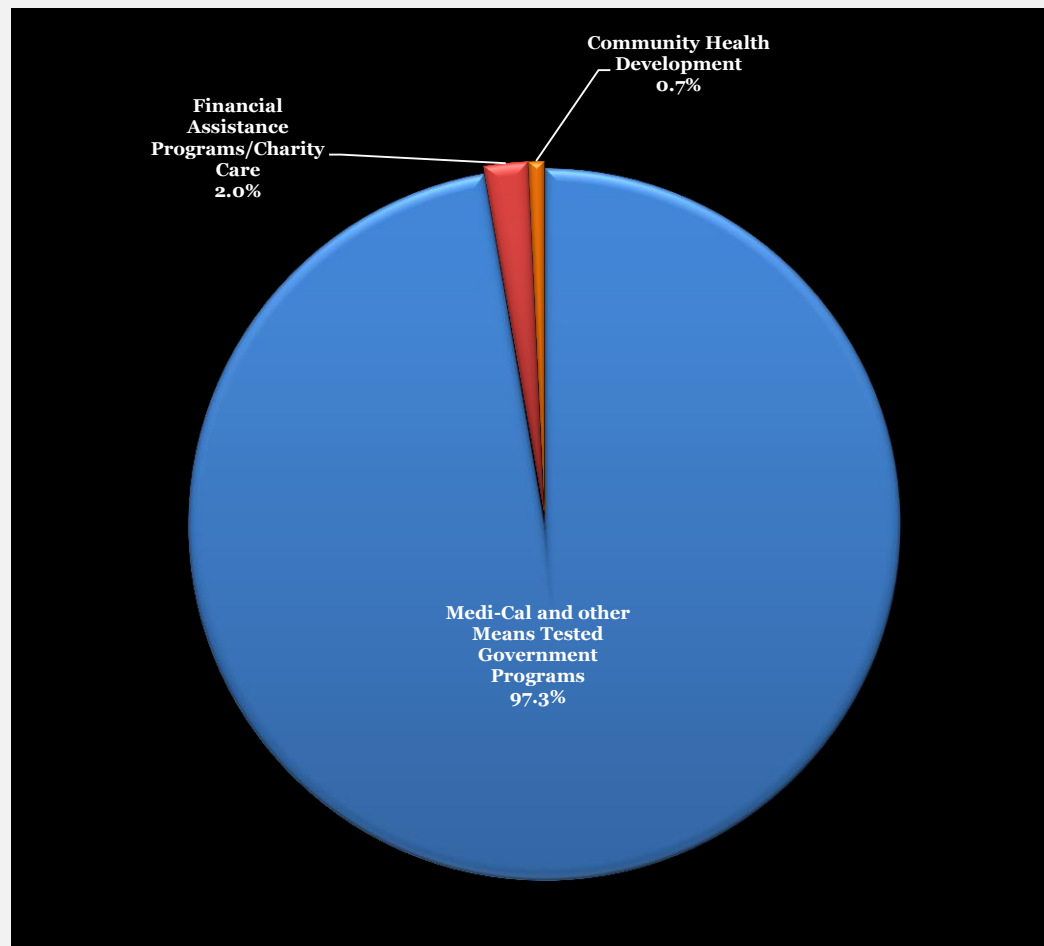
Community Benefit - 2016 (LLUBMC)	Net Community Benefit Economic Value (\$)
Medi-Cal and other Means Tested Government Programs	\$2,464,978
Financial Assistance Programs/Charity Care	\$49,878
Community Health Development	\$18,895
TOTAL	\$2,533,751

Over 4,500 Inpatient
and 40,500
Outpatient visits at
LLUBMC

Over 45 Community
Benefit Programs and
Events

~200 Staff Hours
towards Community
Health Programs

~55,000 individuals
served with
Community Benefit
Programs



LLUBMC 2016 Community Health Development Selected Program Highlights

1. Annual Behavioral Health Fairs

Activities that involve participating in health fairs and providing screenings are typically geared towards the general community and/or employer organizations. Typically, at least one clinician or program representative accompanies the marketing representative to handle any program specific questions and interpret screenings. Our service information is displayed through different collateral pieces such as brochures, flyers, posters and promotional items.

2. Mental/Behavioral Health Education and Awareness

Behavioral Health Education and Awareness activities involve trainings, presentations, and in-service opportunities typically geared towards professionals, clinicians, general community and/or employer organizations. Our services information is provided through different collateral pieces such as brochures and flyers. The goal is to provide information on topics within the scope of behavioral health that will reduce stigma, increase knowledge, and assist community members in accessing services. Topics include awareness around mental health and substance abuse for children, adolescents, and adults. Typically, at least one clinician or program representative accompanies the marketing representative/program assistant to handle any program specific questions.



3. Senior Behavioral Health Services

Activities addressing senior behavioral health typically are in the form of general education, screenings, and awareness activities as much of the geriatric population are often reluctant to access mental health services due to the stigma and shame they may be feeling. Additionally, the Medical Director collaborates with other providers and educates them on signs and symptoms to look for in their patients so they are better able to detect any underlying psychiatric conditions that need to be addressed.

4. Behavioral Health Screenings:

Are geared towards the general community in the Inland Empire, senior facilities, and/or employer organizations. At least one clinical therapist or program representative handles program specific questions and interprets depression screening and mental health assessment results. Service information is displayed through various collateral pieces such as brochures, flyers, posters, and other promotional items.

**LLUMC – Murrieta
Licensed beds:**

106

Over 45,000
Emergency
Department, 7,900
Inpatient and 22,400
Outpatient visits at
LLUMC – Murrieta

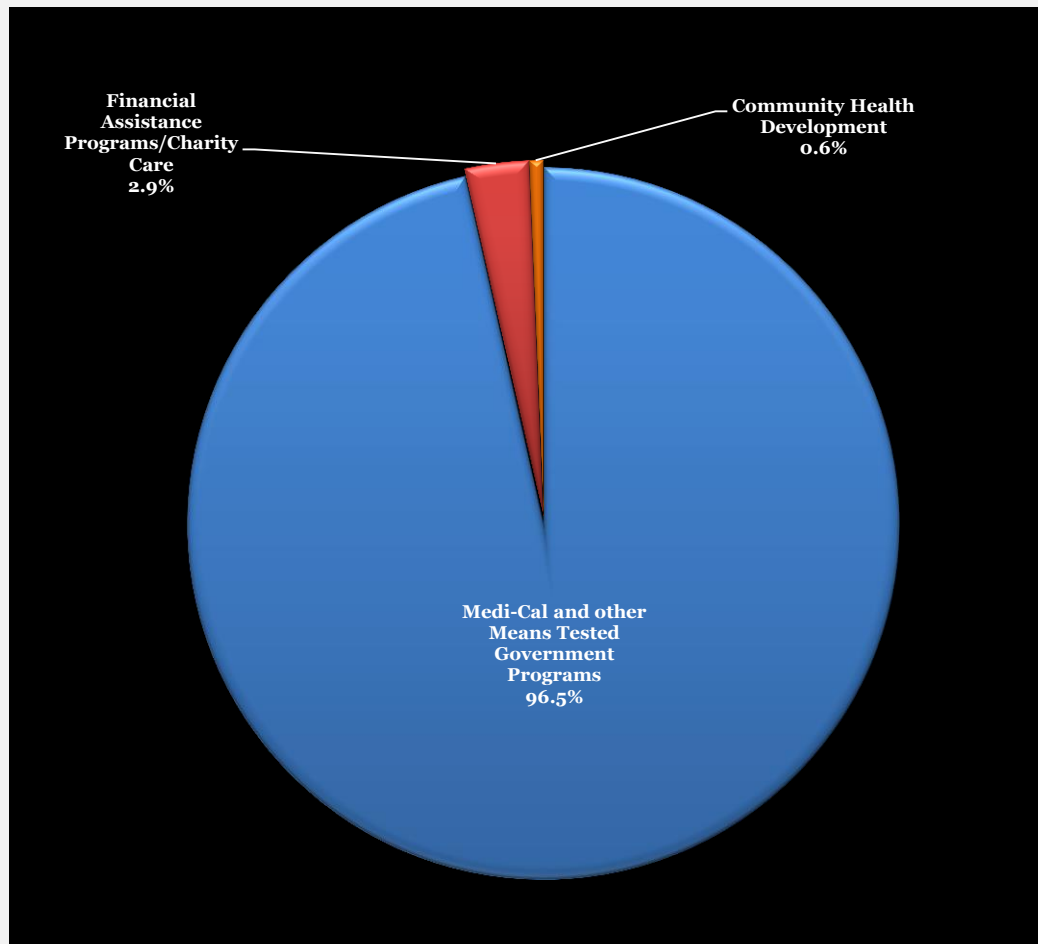
Over 900 lives started
at our Murrieta
Medical Center

Over 60 Community
Benefit Programs and
Events

~1,200 Staff Hours
towards Community
Health Programs

**2016 Community Benefit: Loma Linda University
Medical Center – Murrieta (LLUMC – Murrieta)**

Community Benefit - 2016 (LLUMC - Murrieta)	Net Community Benefit Economic Value (\$)
Medi-Cal and other Means Tested Government Programs	\$10,177,967
Financial Assistance Programs/Charity Care	\$306,019
Community Health Development	\$65,607
TOTAL	\$10,549,593



LLUMC – Murrieta 2016 Community Health Development Selected Program Highlights

1. Annual Family Health Fair

Going on its 5th year, the annual Family Health Fair is an opportunity for LLUMC-M to invite the community to learn about their health. The following free services were provided at the LLUMC-M health fair: dental screenings; colon cancer education; diabetes education, and blood sugar testing; prostate cancer screenings; mother and baby education, breast health education; ER services education; cardiac education; and nutrition (Rethink Your Drink) and healthy weight education for children. Community organizations, non-profit organizations, and support groups (cancer support groups) were present at the fair to provide information about available resources and services in the community served by LLUMC-M.

2. Diabetes Education

The diabetes education classes aimed to increase community awareness on the importance of identifying their cholesterol, BMI, blood pressure, and glucose levels. The goal was to increase the overall self-reported health status as good or excellent.



3. Living with Cancer Support Group

The Living with Cancer support group is an open forum for sharing personal challenges, practical suggestions and everyday triumphs. All sessions will be hosted by a licensed therapist or healthcare specialist. The support group is designed for anyone living with cancer and their families.

4. Healthy Valley Coalition

The Healthy Valley Coalition was established in 2014 with the mission to grow, promote, and increase community health and awareness in Murrieta, Temecula, and the surrounding communities. This coalition is a collaboration of community partners from local businesses, non-profit organizations, hospitals, city and county representatives, and civically engaged citizens. The coalition focuses on aging, chronic illness education, children's health services, and behavioral health initiatives whereby disparities are identified and prevention is promoted.

The vision of the Health Valley Coalition is to support improvement in health indicators of the Southwest Riverside communities. The mission is to provide individuals, businesses, and institutions access to information, resources, ideas, and initiatives that support the community's wellness. The Healthy Valley Coalition meets monthly to discuss ways to improve education and knowledge of health care related events and activities in the Murrieta and surrounding areas. LLUMC-Murrieta joins the monthly meetings and provides guidance from a hospital perspective to increase the health of the community.

Together, We Build Hope for Tomorrow with New Hospitals and a Healthier Future for Our Families and Community

LLUH – COMMUNITY BENEFIT IMPLEMENTATION STRATEGIES 2017-2018

In addition to our ongoing patient care services, health professions education, research and community health development activities, LLUH has undertaken some significant efforts with Vision 2020 and the 2016 Community Needs Assessment. We continue to implement innovative strategies to meet the needs of our community.

1. Vision 2020

As a long-time leader for quality health care and community health in the Inland Empire, LLUH continues to lead and to address the needs of our community with the construction of two new hospital/healthcare facilities on our campus. With new California mandatory seismic regulations set to take effect in 2020, we saw this as an unprecedented opportunity for us to re-imagine health care for the populations and communities we serve. Two new towers — an adult and a children's tower — will be constructed to not only meet the new seismic requirements, but to create cutting-edge, innovative patient care and treatment facilities. This is no small task. As the organization seeks to fulfill its mission of “continuing the teaching and healing ministry of Jesus Christ”, the most modern and safe infrastructure and facilities are needed in support. More miracles will be needed, and we believe they will take place. In conjunction with Vision 2020, we continue to implement innovative strategies to meet the needs of our community. Even with immense change, the goal of LLUH remains the same – to be an example for the way patients are cared for and students are taught, in an effort to help people live productive, healthier lives. At LLUH, our commitment to wholeness goes beyond our jobs; it shows how we “Live it”.



Adult Hospital

- 989,167 square feet
- 16 stories + 1 basement + heliport
- Individual nursing stations located outside patient rooms for total care
- New International Heart Institute

Children's Hospital

- Neonatal Intensive Care Unit (NICU) expansion project
- Total Care birthing center
- Dedicated Children's emergency department

2. Collaborations and New Facilities

Highland Springs Medical Plaza

Highland Springs Medical Plaza is collaboration between Loma Linda University Health, Beaver Medical Group, Redlands Community Hospital and San Geronio Memorial Hospital to enhance access to medical services for families in Beaumont/Banning and surrounding areas.

Loma Linda University Children's Hospital Indio Outpatient Pavilion

(Coming to the Coachella Valley in 2017)

A bold new vision is within reach for Loma Linda University Children's Hospital. Since our very beginning Loma Linda University Children's Hospital has served as the provider of choice for children of the

Coachella Valley. As the health needs of children continue to grow and evolve, so must our treatment methods and service locations. At this new location we will team up with our partner SAC Health System to offer all family members comprehensive

primary care. Children will also be able to receive specialized pediatric care, in an outpatient setting, for conditions that are prevalent in the Coachella Valley. We look forward to bringing hope through healing to kids and their families through these exciting new offerings – it is something we live.

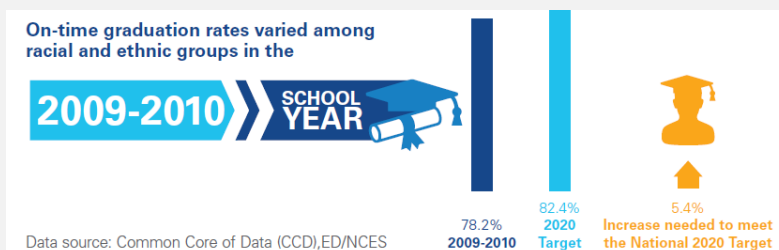


3. Community Health Investments

We strive to enhance population health by addressing the social determinants of health, health education, improved access to care and reduced burden on the health care systems. This is measured by conducting evaluation of activities so that outcomes can be measured and processes, programs and health are continuously improved.

LLUH's Community Health Investments Priority Areas 2017-2018:

- Education
- Workforce Development
- Health and Wellness
 - Mental Health
 - Diabetes
 - Obesity



Community Health

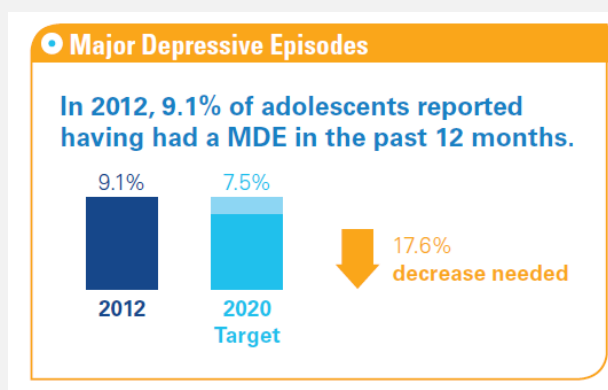
Development Initiatives (“Mini Grants”)

The Loma Linda University Health – Community Benefit program will be providing an annual “mini-funding opportunity” for Community-based organizations (CBOs) in support of their ongoing efforts or initiatives, and geared towards strategic Community Health Investments.

The purpose of this opportunity is to conduct, sponsor and oversee programs or activities through direct community engagement that promote health and healing in response to identified community needs.

Integration of Community Health Workers (CHWs) in LLUH system

CHWs play a key role in increasing community access to health care system; connect members to a medical home, Promote increased access to preventive care, Educate members on use of 24/7 statewide, Nurse Advice line especially on nights and weekends, Remove barriers interfering with members’ ability to access primary care and Advise member about alternate care settings, e.g. urgent care centers. Study by Balcazar et al., 2011 suggested that Community Health Workers can be a public health force for change in the United States.



In FY 2017-2018, our Community Benefit program will support the trainings and internship of tentatively 7 CHWs to be trained in the Clinical track at the Promotores Academy. Three C-CHWs will be hired and placed in high-need areas (e.g. Emergency Department) to help navigate the patients seeking medical care. The integration of CHWs will be studied and the successes of this strategy will be comprehensively evaluated.

“Our vision for LLUH Community Benefit and Health Initiatives is one of true partnership with our community through our shared and ongoing commitment to improved health and quality of life.” – Robin D. Smith, PhD – Director, Community Health Development

REFERENCES

- “A Guide for Planning & Reporting Community Benefit” Catholic Health Association of the United States. 2015 edition
- Balcazar, H., Lee Rosenthal, E., Nell Brownstein, J., Rush, C. H., Matos, S., & Hernandez, L. (2011). Community health workers can be a public health force for change in the United States: three actions for a new paradigm. *American Journal of Public Health*, 101(12), 2199-2203.
- “California Children’s Services” dhcs.ca.gov/services/ccs/Pages/default.aspx.
- *Loma Linda University Health (LLUH) Websites:*
 - “LLUH Financial Assistance.” medical-center.lomalindahealth.org/financial-assistance. © 2017 Loma Linda University Health
 - “LLUH Vision 2020.” lluhvision2020.org. © 2017 Loma Linda University Health
 - “LLUH San Manuel Gateway College.” sanmanuelgatewaycollege.llu.edu. © 2017 Loma Linda University Health
 - “LLUH Institute for Community Partnerships.” lluhcommunityengagement.org. © 2017 Loma Linda University Health
 - “LLUH Research Affairs and Financial Management.” researchaffairs.llu.edu/. © 2017 Loma Linda University Health
 - “The Social Action Community Health System (SACHS).” lomalindauniversityhealth.org/sanbernardino/clinical-care. © 2017 Loma Linda University Health
- “Medi-Cal Overview.” Covered California. coveredca.com/medi-cal.
- “The Children’s Health Insurance Program” healthcare.gov/medicaid-chip/childrens-health-insurance-program.

LLUH COMMUNITY PARTNERS

- Air Quality Management District (AQMD)
- American Cancer Society
- American College of Cardiology
- American Heart Association
- American Lung Association
- American Red Cross
- AmeriCorps
- Boys and Girls Club
- C.E.R.T. - Community ER Response Team
- California Association of Marriage & Family Therapists
- California Bicycle Coalition
- California Safe Program
- California Thoracic Society
- Catholic Diocese of San Bernardino
- Central City Lutheran Mission
- Chamber of Commerce – Inland Empire
- Childhood Cancer Foundation of Southern California, Inc.
- Community Clinic Association of San Bernardino County
- CVEP Career Pathways Initiative
- First 5 of San Bernardino and Riverside
- Faith Based Communities
- Inland Coalition for Health Professions
- Inland Empire Children's Health Initiative
- Inland Empire United Way
- Inland Empire Women Fighting Cancer
- Latino Health Collaborative
- Jefferson Transitional Program
- Nu Voice Society Inland Empire
- Omni Trans
- Partners for Better Health
- Reach Out
- Riverside County Emergency Medical Services (RCEMS)
- Riverside County Department of Public Health
- Ronald McDonald House
- Riverside County Department of Public Health
- SAC Health System
- Safe Kids Inland Empire Coalition
- San Bernardino Associated Governments (SANBAG)
- San Bernardino City Schools Wellness Committee
- San Bernardino County Healthy Communities 2020
 - Healthy Adelanto
 - Healthy Apple Valley
 - Healthy Barstow
 - Healthy Big Bear Lake and Greater Big Bear Valley
 - City of Bloomington
 - Healthy Chino
 - Healthy Chino Hills
 - Healthy Colton
 - Healthy Fontana
 - Healthy Grand Terrace
 - Healthy Hesperia
 - Healthy High Desert
 - Healthy Highland
 - Healthy Loma Linda
 - Healthy Montclair
 - Healthy Muscoy
 - Healthy Ontario
 - Healthy Rancho Cucamonga
 - Healthy Redlands
 - Healthy Rialto
 - Healthy Rim of the Mountain Communities
 - Healthy San Bernardino
 - Healthy Snowline Communities
 - Healthy Upland
 - Healthy Victorville
 - Healthy Yucaipa
- San Bernardino County Medical Society
- San Bernardino County Department of Public Health
- San Bernardino Mexican Consulate
- San Manuel Band of Mission Indians
- Think Together

LOMA LINDA UNIVERSITY HEALTH LEADERSHIP

Loma Linda University Health Board of Trustees

Chair: **Thomas Lemon**, BA, MDiv, General Vice President of the General Conference of Seventh-day Adventists, Silver Spring, Maryland

Vice chair: **Daniel R. Jackson**, MA, President, North American Division of Seventh-day Adventists, Silver Spring, Maryland

Lisa Beardsley-Hardy, PhD, Director, Department of Education, General Conference of Seventh-day Adventists, Silver Spring, Maryland

Shirley Chang, PhD, RN, retired nursing educator, Fremont, California

Richard Chinnock, MD, Chair, Department of Pediatrics, School of Medicine, Loma Linda University, Loma Linda, California

Jere E. Chrispens, MA, retired IT executive, Yucaipa, California

Wilfredo Colón, PhD, Professor and Head, Department of Chemistry and Chemical Biology, Rensselaer Polytechnic Institute, Troy, New York

Sheryl D. Dodds, MS, BSN, RN, Chief Clinical Officer, Senior Executive Officer, Florida Hospital, Orlando, Florida

Steven Filler, DDS, Associate Dean, Student, Alumni & External Affairs, University of Alabama School of Dentistry, Pelham, Alabama

Ricardo Graham, DMin, President, Pacific Union Conference of Seventh-day Adventists, Westlake Village, California

H. Roger Hadley, MD, Executive Vice President for Medical Affairs, Loma Linda University Health; Dean, School of Medicine, Loma Linda University, Loma Linda, California

Wayne B. Harris, MD, Associate Professor, Department of Hematology and Medical Oncology, Emory University School of Medicine, Atlanta, Georgia

Richard H. Hart, MD, DrPH, President & Chief Executive Officer, Loma Linda University Health; President, Loma Linda University; President, Loma Linda University Medical Center, Loma Linda, California

Douglas Hegstad, MD, Chair, Department of Internal Medicine, School of Medicine, Loma Linda University, Loma Linda, California

Kerry Heinrich, JD, Executive Vice President, Hospital Affairs, Loma Linda University Health; Chief Executive Officer, Loma Linda University Medical Center, Loma Linda, California

Mark Johnson, BA, President, Canadian Union Conference of Seventh-day Adventists, Oshawa, Ontario, Canada

Melissa Kidder, MD, Chair, Department of Obstetrics-Gynecology, School of Medicine, Loma Linda University, Loma Linda, California

Donald G. King, DrPH, President, Atlantic Union Conference of Seventh-day Adventists, South Lancaster, Massachusetts

Peter Landless, MB, BCh, Director, Department of Health Ministries, General Conference of Seventh-day Adventists, Silver Spring, Maryland

Robert E. Lemon, MBA, Special Assistant to the Treasurer of the General Conference of Seventh-day Adventists, Silver Spring, Maryland

Thomas Lemon, MDiv, General Vice President of the General Conference of Seventh-day Adventists, Silver Spring, Maryland

Robert Martin, MD, Chair, Department of Anesthesiology, School of Medicine, Loma Linda University, Loma Linda, California

Patrick Minor, MSPH, Ministry of Health Epidemiologist, Center for Disease Control, Zambia

Larry Moore, MDiv, President, Southwestern Union Conference of Seventh-day Adventists, Burleson, Texas

G.T. Ng, PhD, Secretary, General Conference of Seventh-day Adventists, Silver Spring, Maryland

Ricardo Peverini, MD, Senior Vice President for Clinical Faculty, Loma Linda University Health, Loma Linda, California

Juan Prestol-Puesán, MBA, Treasurer, General Conference of Seventh-day Adventists, Silver Spring, Maryland

Scott Reiner, MS, President, Adventist Health, Roseville, California

Herbert Ruckle, MD, Chair, Department of Urology, School of Medicine, Loma Linda University, Loma Linda, California

Eunmee Shim, MSN, Vice President, Business Development and Strategic Planning, Adventist Health Care, Shady Grove Medical Center, Rockville, Maryland

Max A. Trevino, BS, retired administrator, Burleson, Texas

Eric Tsao, MBBS, physician, Corona, California

Thomas L. Werner, MBA, retired healthcare executive, Orlando, Florida

David Williams, PhD, Florence & Laura Norman Professor of Public Health, Harvard School of Public Health, Boston, Massachusetts

Ted N.C. Wilson, PhD, President, General Conference of Seventh-day Adventists, Silver Spring, Maryland

Roger Woodruff, MD, Chair, Department of Family Medicine, School of Medicine, Loma Linda University, Loma Linda, California

Loma Linda University Health Advisors

Larry Blackmer, MA, Director, Department of Education, North American Division, General Conference of Seventh-day Adventists, Silver Spring, Maryland

Ronald L. Carter, PhD, Executive Vice President, University Affairs

Jonathan Duffy, MPH, President, ADRA, General Conference of Seventh-day Adventists, Silver Spring, Maryland

Kevin J. Lang, MBA, CPA, Executive Vice President, Finance & Administration/Chief Financial Officer, Loma Linda University Health, Loma Linda, California

Don Livesay, MDiv, President, Lake Union Conference of Seventh-day Adventists, Berrien Springs, Michigan

Gary Thurber, MA, President, Mid-America Union Conference of Seventh-day Adventists, Lincoln, Nebraska

Max C. Torkelsen II, MPH, President, North Pacific Union Conference of Seventh-day Adventists, Ridgefield, Washington

Ella Simmons, EdD, Vice President, General Conference of Seventh-day Adventists, Silver Spring, Maryland

Ron Smith, DMin, PhD, President, Southern Union Conference of Seventh-day Adventists, Decatur, Georgia

Artur Stele, PhD, General Vice President, General Conference of Seventh-day Adventists, Silver Spring, Maryland

Ray Wahlen, MBA, CPA, Undertreasurer, General Conference of Seventh-day Adventists, Silver Spring, Maryland

Dave Weigley, MBA, President, Columbia Union Conference of Seventh-day Adventists, Columbia, Maryland

William Winston, MDiv, President, South Atlantic Conference of Seventh-day Adventists, Atlanta, Georgia

Loma Linda University Health – Administration

Richard H. Hart, MD, DrPH, President & Chief Executive Officer

Kevin J. Lang, MBA, Executive Vice President, Finance & Administration/Chief Financial Officer

Kerry Heinrich, JD, Executive Vice President, Hospital Affairs

H. Roger Hadley, MD, Executive Vice President, Medical Affairs

Ronald L. Carter, PhD, Executive Vice President, University Affairs

Rachelle B. Bussell, CFRE, Senior Vice President, Advancement

Lyndon Edwards, MBA, MHS, Senior Vice President, Adult Hospital Services

Mark L. Hubbard, BS, Senior Vice President, Risk Management, Human Resources Management, Assistant Secretary

Angela Lalas, CPA, CGMA, MBA, Senior Vice President, Finance

Rodney D. Neal, MBA, Senior Vice President, Finance

Scott Perryman, MBA, Senior Vice President, Children's Hospital

Ricardo Peverini, MD, Senior Vice President, Clinical Faculty

David G. Wren, MHA, Senior Vice President, Faculty Practice

Trevor Wright, MHA, Senior Vice President, Health Facilities Operations; Interim Administrator, LLUMC-Murrieta

Peter Baker, JD, MBA, Vice President, Business Development

Elizabeth Bossert, PhD, RN, Vice President, Nursing Education

Beverly J. Buckles, DSW, Vice President, Behavioral Health Education

Ronald J. Dailey, PhD, Vice President, Dentistry

Melvin Eisele, MBA, Vice President, Revenue Cycle

Edward Field, MBA, Vice President, Behavioral Medicine Center

Daniel W. Giang, MD, Vice President, Graduate Medical Education

David P. Harris, PhD, Vice President/Chief Information Officer, Academia

Marilyn Herrmann, PhD, RN, Interim Vice President, Pharmacy Education

Jonathan Jean-Marie, MHA, Vice President, East Campus & Surgical Hospital

Helen Hopp Marshak, PhD, MCHES, Vice President, Public Health Education

Craig R. Jackson, JD, MSW, Vice President, Allied Health Professions Education

James M. Pappas, MD, Vice President, Quality

Jon Paulien, PhD, Vice President, Religion Education

Mark E. Reeves, MD, PhD, Vice President, Institutes

Rhodes Rigsby, MD, Vice President, Transitional Care

Rick E. Williams, PhD, Vice President, Student Services

Anthony J. Zuccarelli, PhD, Vice President, Graduate Studies Education

Kent. A. Hansen, JD, General Counsel

Myrna Hanna, MA, Corporate Secretary

Orlando Huggins, BBA, Assistant Secretary

Whitney Smith, MBA, Assistant Secretary

LLUH COMMUNITY BENEFIT ADMINISTRATIVE COUNCIL

Barbara Alejandre

Chief Intergovernmental Officer
San Bernardino County School District

Dr. Marti Baum

Medical Director, Community Health
Development
Loma Linda University Health

Dr. Juan Carlos Belliard

Director, Institute for Community
Partnerships
Loma Linda University Health

Jessica Berto

Director, Marketing
Loma Linda University Health

Dr. Richard Chinnoch

Chief Medical Officer and Physician-In-
Chief
Loma Linda University Children's Hospital

Jere Chrispens

Member, Board of Trustees
Loma Linda University Health

Reg Javier

Deputy Executive Director
San Bernardino County Economic
Development Agency

George Lamb

President/CEO
Faith Advisory Council for Community
Transformation

Jennifer Lossius

Manager, Community Health & Patient
Education, Murrieta
Loma Linda University Health

Kevin Mahany

Director of Advocacy & Healthy
Communities
St. Mary Medical Center

Heidi Marshall

Executive Director
Riverside County Workforce Development
Board

Miguel McQueen

Deputy Director
San Bernardino Workforce Development
Board

Rhonda Moore

Sr. Marketing Specialist
Loma Linda University Health

Ginger Ontiveros

Executive Director Community Engagement
SBCUSD – Community Engagement Office

Pedro Payne

Director, PossAbilities & Just for Seniors,
East Campus
Loma Linda University Health

Dr. Deanna Stover

Chief Executive Officer
Community Clinic Association

Dr. Gerald Winslow

Director, Institute for Health Policy and
Leadership

Loma Linda University Health

Loma Linda University Health

Amy Wright

Government Relations Representative,
Children's Hospital

Loma Linda University Health

Dr. Roger Woodruff

Chair, Family Medicine

LLUH COMMUNITY BENEFIT STEERING COMMITTEE

(To be finalized in 2017-2018)

Group of leaders from various community-based organizations, community leaders and community representatives are invited to be part of the community steering committee. The members will help us continue to better understand the needs of our community and evaluate our programs, initiatives and efforts on an ongoing basis.

COMMUNITY HEALTH DEVELOPMENT TEAM

Juan Carlos Belliard, PhD, MPH

Assistant Vice President | Community Partnerships & Diversity
Director | Institute for Community Partnerships

Marti Baum, MD

Medical Director | Community Health Development

Angelina Duran

Sr. Administrative Assistant | Community Health Development & Transitional Care

Robin D. Smith, PhD

Associate Director | Institute for Community Partnerships
Director | Community Health Development

Chintan K. Somaiya, MS, MBA

Program Manager | Community Health Development

ACKNOWLEDGEMENTS

LLUH Finance & Accounting Team

Eric Patrona, Reimbursement Manager
Kevin Nunn, Finance & Account Manager
Bruce Resiwain, Financial Analyst
Gregory Woodhouse, Sr. Accounting & Financial Analyst
Allen Wassermann, Financial Analyst

LLUH Marketing & Events Team

Heather Valentine, Executive Director
Jessica Berto, Director
Samantha Orcasitas, Manager
Rhonda Moore, Sr. Marketing Specialist
Shaina Burns, Sr. Marketing Specialist
Jacqueline Monarrez, Marketing Specialist

LLUH Innovation, Data Governance & Data Architect Team

Jeremy Hubbard, Executive Director
Edward Teh, Program Manager
Darrin Blocker, Sr. Data Architect
Amber Zhang, Data Analyst

LLUH Internal Audit

Andrea Paolini, Director

LLUH PBO

Barry Stimmel, Director of Revenue Integration

LLUH Research Affairs and Financial Management

Aleta Savage, Director

LLUH Strategic Alliances

Kelly Jackson, Director

LLUH Business Development Team

Daryl Oft, Director
Andrew Hibbert, Manager
Brandon Iesberts, Sr. Development Analyst

SAC Health System

Nancy Young, President CEO
Andrea Mitchell, Analyst

