

# LLUH Residency Coordinator Directory



**Hannah Oh**

Anesthesiology  
Adult Cardiothoracic Anesthesiology  
Pediatric Anesthesiology  
Internal Medicine Anesthesiology  
Ext. 49404



**Jozelle Wong Yu**

Anesthesiology  
Ext. 44015



**Rebekah Hinton**

Anesthesiology Critical Care Medicine  
Ext. 47438



**Cindi Morrill**

Dermatology  
Micrographic Surgery & Dermatologic  
Oncology  
Ext. 22842



**Tiana Gonzales**

Emergency Medicine  
Ext. 88719



**Shelly Nelson**

Pediatric Emergency Medicine  
Ext. 87698



**Jessica Gonzalez Nevin**

Family Medicine  
Ext. 66821



**Yazmin Gutierrez**

Family Medicine  
Ext. 66688



**Ofelia Villalobos**

Family Medicine  
Ext. 19442



**Kimberly LaBelle**

Geriatric Medicine  
Ext. 14967



**Dawn Gordon**

Hospice and Palliative Medicine  
Ext. 87196



**Britny Bay**

Internal Medicine  
Ext. 15353



**Lauren Salinas**

Internal Medicine  
Ext. 87263



**Lisset Skaggs**

Internal Medicine  
Ext. 88767



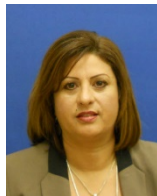
**Byron Bolton**

Cardiovascular Disease  
Advanced Heart Failure & Transplant  
Cardiology  
Clinical Cardiac Electrophysiology  
Interventional Cardiology  
Ext. 46140



**Lucia Sanchez**

Cardiovascular Disease  
Advanced Heart Failure & Transplant  
Cardiology  
Clinical Cardiac Electrophysiology  
Interventional Cardiology



**Christine Pahuratana**

Hematology and Medical Oncology  
Ext. 55413



**Michael Ervin**

Endocrinology, Diabetes and  
Metabolism  
Infectious Disease  
Ext. 55512



**LaTanya Pickett**

Gastroenterology  
Nephrology  
Transplant Hepatology  
Ext. 55512



**Dottie Acosta**

Critical Care Medicine  
Pulmonary Disease and Critical Care  
Rheumatology  
Sleep Medicine  
Ext. 44911



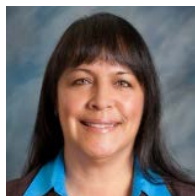
**Erika Matthews**

Neurological Surgery  
Ext. 88723



**Anna Valencia**

Neurology  
Ext. 55411



**Eileen Griego**

Obstetrics and Gynecology  
Ext. 15534



**Dilan Ajtun**

Gynecologic Oncology  
Ext. 15981



**Jason Polanco**

Ophthalmology  
Ext. 22182



**Victoria Quihuis**

Oral & Maxillofacial Surgery\*  
Ext. 44671



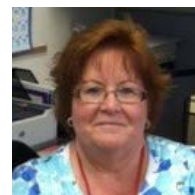
**Chausa Casey**

Hand Surgery  
Orthopaedic Surgery  
Ext. 62696



**Vanessa Andronaco Glotzbach**

Sports Medicine Fellowship (Hoag)  
(949) 679-8546



**Cynthia Greber**

Otolaryngology  
Ext. 88558



**Vivian Solis**

Otolaryngology  
Ext. 19820

# LLUH Residency Coordinator Directory



[Nina Luciano](#)  
Pathology  
Ext. 44094



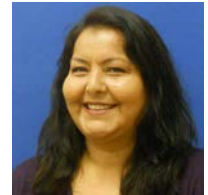
[Cathy Winter](#)  
Child Abuse Pediatrics  
Child Neurology  
Neonatal Perinatal Medicine  
Ext. 15746



[Rachel Lynne Brantley](#)  
Internal Medicine-Pediatrics  
Ext. 15915



[Christine Roland](#)  
Pediatrics  
Ext. 88676



[Alma Higuera](#)  
Pediatric Critical Care Medicine  
Ext. 44250



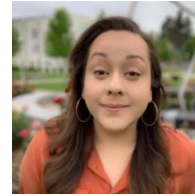
[Liz Tapia](#)  
Physical Medicine and Rehabilitation  
Pain Medicine  
Ext. 66202



[Susie Rabadan](#)  
Physical Medicine and Rehabilitation  
Pain Medicine  
Ext. 66202



[Karina Carranza](#)  
Plastic Surgery  
Ext. 83904



[Paulina Salcedo](#)  
Family Medicine Preventive Medicine  
Lifestyle Medicine\*  
Preventive Medicine  
Ext. 15616



[Lora Benzatyan](#)  
Addiction Medicine  
Occupational Medicine  
Ext. 87622



[Noelle Burchartz](#)  
Psychiatry  
Child and Adolescent Psychiatry  
Ext. 39567



[Traci Johnson](#)  
Psychiatry  
Ext. 39532



[Pamela Figueroa](#)  
Radiation Oncology  
Ext. 87458



[Marissa Chaffee](#)  
Radiology  
Ext. 44013



[Julie \(May\) Whitaker](#)  
Interventional Radiology – Integrated  
Interventional Radiology – Independent  
Ext. 44529



[Adaya-Renee Littlejohn](#)  
Neuroradiology  
Pediatric Radiology  
Ext. 46039



[Christina Velazquez](#)  
Complex General Surgical Oncology  
Ext. 15948



[Tinesha Charles](#)  
Pediatric Surgery  
Pediatric Surgery Clinical Scholar  
Fellowship\*  
Ext. 44619



[Amy Albright](#)  
Surgery  
Ext. 44289



[Sarah Christensen](#)  
Surgery  
Ext. 44289



[Tatiana Flowers](#)  
Surgery  
Ext. 44289



[Nikki McCutchan](#)  
Surgical Critical Care  
Ext. 55939



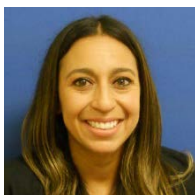
[Melissa Perez](#)  
Thoracic Surgery  
Thoracic Surgery - Integrated  
Ext. 44354



[Connie Phillips](#)  
Transitional Year  
Ext. 66558



[Jenny Marrow](#)  
Urology  
Ext. 16413



[Crystal Cisneros](#)  
Vascular Surgery  
Ext. 88648