

# LLUH Residency Coordinator Directory



**Hannah Oh**

Anesthesiology  
Adult Cardiothoracic Anesthesiology  
Pediatric Anesthesiology  
Internal Medicine Anesthesiology  
Ext. 49404



**Jozelle Wong Yu**

Anesthesiology  
Ext. 44015



**Rebekah Hinton**

Anesthesiology Critical Care Medicine  
Ext. 47438



**Cindi Morrill**

Dermatology  
Micrographic Surgery & Dermatologic  
Oncology  
Ext. 22842



**Tiana Gonzales**

Emergency Medicine  
Ext. 88719



**Shelly Nelson**

Pediatric Emergency Medicine  
Ext. 87698



**Jessica Gonzalez**

Family Medicine  
Ext. 66821



**Yazmin Gutierrez**

Family Medicine  
Ext. 66688



**Ofelia Villalobos**

Family Medicine  
Ext. 19442



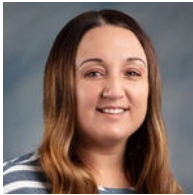
**Kimberly LaBelle**

Geriatric Medicine  
Ext. 14967



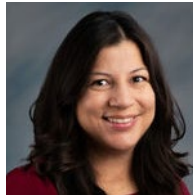
**Dawn Gordon**

Hospice and Palliative Medicine  
Ext. 87196



**Britny Bay**

Internal Medicine  
Ext. 44074



**Melorie Howard**

Internal Medicine  
Ext. 55945



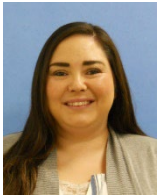
**Lisset Skaggs**

Internal Medicine  
Ext. 44074



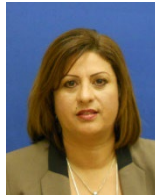
**Byron Bolton**

Cardiovascular Disease  
Ext. 46140



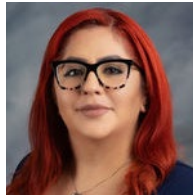
**Melissa Soriano**

Advanced Heart Failure & Transplant  
Cardiology  
Clinical Cardiac Electrophysiology  
Interventional Cardiology  
Ext. 44498



**Christine Pahuratana**

Hematology and Medical Oncology  
Ext. 55413



**Lauren Salinas**

Endocrinology, Diabetes and  
Metabolism  
Infectious Disease  
Ext. 82963



**LaTanya Pickett**

Gastroenterology  
Nephrology  
Transplant Hepatology  
Ext. 55512



**Dottie Acosta**

Pulmonary Disease and Critical Care  
Rheumatology  
Ext. 44911



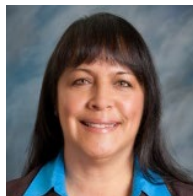
**Erika Matthews**

Neurological Surgery  
Ext. 88723



**Anna Valencia**

Neurology  
Ext. 55411



**Eileen Griego**

Obstetrics and Gynecology  
Ext. 15534



**Dilan Ajtun**

Gynecologic Oncology  
Ext. 15981



**Jason Polanco**

Ophthalmology  
Ext. 22182



**Victoria Quihuis**

Oral & Maxillofacial Surgery\*  
Ext. 44671



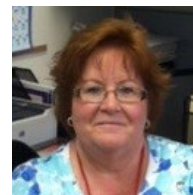
**Chausa Casey**

Hand Surgery  
Orthopaedic Surgery  
Ext. 62696



**Vanessa Andronaco Glotzbach**

Sports Medicine Fellowship (Hoag)  
(949) 679-8546



**Cynthia Greber**

Otolaryngology  
Ext. 88558



**Nicole Woods**

Otolaryngology  
Ext. 88558

# LLUH Residency Coordinator Directory



**[Nina Luciano](#)**  
Pathology  
Ext. 44094



**[Cathy Winter](#)**  
Child Abuse Pediatrics  
Child Neurology  
Neonatal Perinatal Medicine  
Ext. 15746



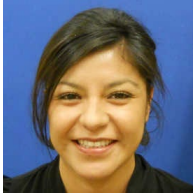
**[Rachel Lynne Brantley](#)**  
Internal Medicine-Pediatrics  
Ext. 15915



**[Christine Roland](#)**  
Pediatrics  
Ext. 88676



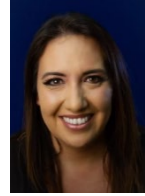
**[Alma Higuera](#)**  
Pediatric Critical Care Medicine  
Ext. 44250



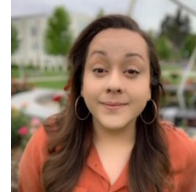
**[Liz Tapia](#)**  
Physical Medicine and Rehabilitation  
Pain Medicine  
Ext. 66202



**[Laura Palacios](#)**  
Pain Medicine  
Ext. 66202



**[Karina Carranza](#)**  
Plastic Surgery  
Ext. 83904



**[Paulina Salcedo](#)**  
Family Medicine Preventive Medicine  
Lifestyle Medicine\*  
Preventive Medicine  
Ext. 15616



**[Lora Benzatyan](#)**  
Addiction Medicine  
Occupational Medicine  
Ext. 87622



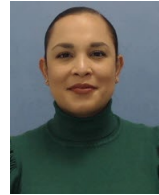
**[Noelle Burchartz](#)**  
Psychiatry  
Child and Adolescent Psychiatry  
Ext. 39567



**[Traci Johnson](#)**  
Psychiatry  
Ext. 39532



**[Pamela Figueroa](#)**  
Radiation Oncology  
Ext. 87458



**[Claudia De Dios Uribe](#)**  
Radiology  
Ext. 87814



**[Susie Rabadan](#)**  
Neuroradiology  
Pediatric Radiology  
Ext. 44281



**[Julie \(May\) Whitaker](#)**  
Interventional Radiology – Integrated  
Interventional Radiology – Independent  
Ext. 44529



**[Nikki McCutchan](#)**  
Complex General Surgical Oncology  
Surgical Critical Care  
Ext. 55939



**[Tinesha Charles](#)**  
Pediatric Surgery  
Pediatric Surgery Clinical Scholar  
Fellowship\*  
Ext. 44619



**[Amy Albright](#)**  
Surgery  
Ext. 44289



**[Sarah Christensen](#)**  
Surgery  
Ext. 44289



**[Tatiana Flowers](#)**  
Surgery  
Ext. 44289



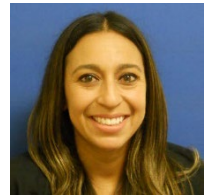
**[Adriana Acosta](#)**  
Thoracic Surgery  
Thoracic Surgery - Integrated  
Ext. 48436



**[Connie Phillips](#)**  
Transitional Year  
Ext. 66558



**[Jenny Marrow](#)**  
Urology  
Ext. 16413



**[Crystal Cisneros](#)**  
Vascular Surgery  
Ext. 88648