



**2023**

**ANNUAL SECURITY AND  
FIRE SAFETY REPORT**



**LOMA LINDA UNIVERSITY  
HEALTH**

**Many Strengths.  
One Mission**

# Table of Contents

Annual Crime Report	3
Student Right-To-Know and Campus Security Act of 1990	4
Campus Security Authorities	5
Preparation and Publication Of The Annual Security & Fire Safety Report	6
Daily Crime Logs and Fire Safety Logs	6
Reporting A Crime or Incident	6
Victim Confidentiality	6
Harassment	7
Hate Crimes and Violence	7
Emergency Notifications/Timely Warnings	7
Armed Assailants/Active Shooters	8
Emergency Disaster and Evacuation Procedures	9
Crime Prevention Programs	9
Theft Prevention	10
Internet Safety	10
Weapons Policy	10
Substance and Alcohol Abuse	11
Counseling and Treatment Programs	11
Prohibiting Sexual Misconduct and Discrimination on The Basis of Sex (Title IX)	13
Local Law Enforcement Involvement	16
Sex Offender Registry and Access to Related Information	16
Residence Hall Missing Student	17
Building Access	18
On-Campus Safety	18
Off-Campus Residential Safety	18
Interactions with Unhoused/Homeless Persons	19
Bicycles	19
Theft of Vehicle Parts and Fuel	20
Campus Shuttle Services/Campus Link	21
Lost and Found	21
Important Contact Information	22
Emergency Telephones	22
Security Services Leadership Team	23
Security Services Reports and Records	24
Annual Fire Safety Reports	26

# Message from the Director

**Dear Students, Faculty, Staff and Visitors:**

**Welcome to the campus of Loma Linda University Health!**

The Department of Security Services is responsible for providing security services and programs to the Loma Linda University Health campus and healthcare communities. Our commitment is to provide the best possible services to meet the security needs of the Loma Linda University Health community. We strive to follow our mission to participate in Christ's ministry of health and healing through education, healthcare and research, while embracing our core values of Compassion, Excellence, Humility, Integrity, Justice, Teamwork and Wholeness.

We have a professional team of trained and experienced officers and support personnel whom you will find to be visible and responsive to the security needs of the community. In an effort to provide the highest level of customer service and transparency, feedback and input regarding our services are encouraged.

Each year, Loma Linda University Health issues the Annual Security and Fire Safety Report as required by the Department of Education's Jeanne Clery Act. The statistics reflect incidents that have occurred within the main academic campus and those from local law enforcement for the public areas immediately adjacent to the campus. In addition to these numbers, we include crime statistics for properties that are owned or controlled by Loma Linda University Health but are not immediately adjacent to the main campus.

As your active participation in the public safety of our community is critical in responding to and preventing crime on our campus, I encourage you to read through the 2023 Annual Security and Fire Safety Report. This document will provide helpful advice on safety issues and crime reporting.

We ask that you consider both your safety and that of others, and to make common sense choices to avoid placing yourself and others in potentially unsafe or at-risk situations. Armed with the knowledge contained in this report you will be empowered to recognize, report and prevent crime.

An informed campus is a safer campus, and everyone has a role in the quality of campus life.

If you have any questions or comments, please contact Security Services at: 909-558-5419 or ext. 55419 from on-campus phones, or email us at: SecurityMC@llu.edu.

Sincerely,

John Marshall  
Director, Security Services  
Loma Linda University Health



# ANNUAL CRIME REPORT

Loma Linda University Health's Annual Crime Report includes statistics for the previous three years concerning reported crimes that occurred on-campus, in certain off-campus buildings or property owned or controlled by Loma Linda University Health, and on public property within or immediately adjacent to and accessible from the campus. The report also includes institutional policies concerning campus safety and security; such as sexual assault, emergency alerts and other security and safety-related matters.

## **Legislative History of the Jeanne Clery Disclosure of Campus Security Policy and Campus Crime Statistics Act (The Clery Act)**

The Student Right to Know and Campus Security Act (Public Law 101-542) was signed into law by President Bush in 1990 and went into effect on September 1, 1991. Title II of this act is known as the Crime Awareness and Campus Security Act of 1990. This act amends the Higher Education Act of 1965 (HEA) by adding campus crime statistics and reporting provisions for postsecondary institutions. It requires the disclosure of crime statistics for the most recent three years, as well as disclosure of the organization's current security policies. Institutions are also required to issue timely warnings when necessary. All public and private Title IV eligible institutions must comply with the requirements of this act, which is enforced by the US Department of Education (DOE).

This law was amended when Congress enacted the Campus Sexual Assault Victim's Bill of Rights as part of the Higher Education Amendments of 1992 {Public Law 102-325, Section 486(C)}, giving victims of sexual assault on campus certain basic rights. In addition, institutions are required to develop and distribute a policy statement concerning their campus sexual assault programs targeting the prevention of sex offenses. This statement must also address the procedures to be followed if a sex offense occurs.

The most recent version of this law was passed as part of the Higher Education Amendments Act of 1998 {Section 486(e) of Public Law 105-244}. The official title under this act is the Jeanne Clery Disclosure of Campus Security Policy and Campus Crime Statistics Act {20 U.S.C. 1092(f)}. On November 1, 1999, the DOE issued the final regulations, which went into effect on July 1, 2000. The amendments require the DOE to collect, analyze and report to Congress on the incidences of crime on college campuses. The amendments also expand the requirement of the Student Right to Know and Campus Security Act of 1990. All institutions of higher education participating in the federal student aid programs must disclose to students, faculty, staff and, upon request, prospective students or employees, any information regarding the incidence of crimes on campus as part of their campus security report.



The 1998 amendments made several changes to the disclosure requirements. Among these changes were the addition of two crimes (arson and negligent manslaughter) and three locations (residence halls, non-campus buildings or property not geographically contiguous to the campus, and public property immediately adjacent to a facility that is owned or operated by the organization for education purposes) that schools must include in the reported statistics. Institutions that have a campus police or security department are required to maintain a daily crime log that is available to the public.

The Clery Act was further amended in October 2000 by the Campus Sex Crimes Prevention Act (Section 1601 of Public Law 106-386). The changes went into effect on October 28, 2002. Beginning in 2003, institutions are required to notify the campus community where law enforcement agency information provided by a state concerning registered sex offenders who are on campus may be obtained.

In 2013, the Violence Against Women Reauthorization Act (VAWA) was signed into legislation; which required institutions to include domestic violence, stalking, and dating violence in their crime reporting categories in the Annual Security and Fire Safety Report.

For purposes of policy and this report, the term “domestic violence” includes felony or misdemeanor crimes of violence committed by a current or former spouse of the victim, by a person with whom the victim shares a child in common, by a person who is cohabitating with or has cohabitated with the victim as a spouse, by a person similarly situated to a spouse of the victim under the domestic or family violence laws of the jurisdiction receiving grant monies, or by any other person against an adult or youth victim who is protected from that person’s acts under the domestic or family violence laws of the jurisdiction. In California, domestic violence is a crime under section 273.5 of the Penal Code.

“Dating violence” is defined as violence by a person who has been in a romantic or intimate relationship with the victim. Whether there was such a relationship will be determined by its length, type and frequency of interaction between victim and perpetrator. According to the National Center for Victims of Crimes, dating violence is controlling, abusive and aggressive behavior in a romantic relationship. It can include verbal, emotional, physical or sexual abuse; or a combination.

## **STUDENT RIGHT-TO-KNOW AND CAMPUS SECURITY ACT OF 1990**

In order to comply with the Student Right-to-Know and Campus Security Act of 1990, Security Services prepares the Annual Security and Fire Safety Report following the guidelines of the Jeanne Clery Disclosure of Campus Security Policy and Crime Statistics Act of 2008 and its subsequent legislative updates and amendments.



This report is prepared in cooperation with local law enforcement agencies and other designated Campus Security Authorities. Each entity or department provides updated data information on disciplinary referrals and their educational efforts and programs to comply with the Act.

Each year (by October 1) an electronic notification is sent to all current students and employees providing the website address and availability of the report online: <https://luh.org/patients-visitors/visitors/security-services/annual-security-report>. Upon request, anyone may obtain a copy of the report from Security Services by calling 909-558-5419.

## CAMPUS SECURITY AUTHORITIES

All Campus Security Authorities (CSA) have an obligation to forward to Security Services any information on offenses reported to them for inclusion in the report.

CSAs include not only Security personnel, but the President and Vice Presidents of Loma Linda University Health, the Deans and Associate Deans and their staff of the various schools of the University, the Deans and staff of residence halls or apartments, Student Services, athletics, student activity coordinators and faculty advisors.

The Clery Act requires our organization to include four general categories of crime statistics:

### Criminal Offenses

Criminal Homicide, including Murder and Non-negligent Manslaughter, and Manslaughter by Negligence; Sexual Assault, including Rape, Fondling, Incest and Statutory Rape; Robbery; Aggravated Assault; Burglary; Motor Vehicle Theft; and Arson.

### Hate Crime

Any of the above-mentioned offenses, and any incidents of Larceny-Theft, Simple Assault, Intimidation, or Destruction/Damage/Vandalism of Property that were motivated by bias.

### VAWA Offenses

Any incidents of Domestic Violence, Dating Violence and Stalking. (Note that Sexual Assault is also a VAWA Offense but is included in the Criminal Offenses category for Clery Act reporting purposes.)

### Arrests and Referrals for Disciplinary Action for Weapons

Carrying/Possessing Law Violations, Drug Abuse Violations and Liquor Law Violations.

### Confidential Reporting to Counselors

Campus “Pastoral Counselors” and Campus “Professional Counselors”, when acting as such, are not considered to be a Campus Security Authority and are not required to report crimes for inclusion in the annual disclosure of crime statistics. As a matter of policy, they are encouraged when they deem it appropriate to inform persons being counseled of the procedures to report crimes voluntarily to Security Services or local law enforcement.



A “Pastoral Counselor” is an employee of Loma Linda University Health who is associated with a religious order or denomination, recognized by that religious order or denomination as someone who provides confidential counseling, and who is functioning within the scope of that recognition as a pastoral counselor.

A “Professional Counselor” is an employee of Loma Linda University Health whose official responsibilities include providing psychological counseling to members of the campus community and who is functioning within the scope of his or her license or certification.

## PREPARATION AND PUBLICATION OF THE ANNUAL SECURITY & FIRE SAFETY REPORT

Loma Linda University Health prepares the Annual Security & Fire Safety Report in compliance with the Jeanne Clery Disclosure of Campus Security Policy and Crime Statistics Act. The purpose of this report is to provide crime and other safety-related information to members of the campus community. This report contains three years' worth of crime statistics (2020-2022), as well as statements regarding certain campus policies and procedures, including policies regarding sexual and gender-based violence and alcohol and other drugs. This report also includes fire safety policies and procedures, as well as fire statistics for on-campus housing facilities from the previous three years, in compliance with the Clery Act and the Higher Education Opportunity Act (HEOA), which require colleges and universities that have on-campus housing to annually report and submit fire safety information and statistics.

- Collection of Crime and Fire Statistics. Crime reports are collected from all Clery-defined geography, including on-campus, on campus student housing, non-campus and public property locations. Fire data relating to on-campus student housing is also reported. This data is compiled by the Clery Act Compliance Coordinator in conjunction with relevant Loma Linda University Health departments, local law enforcement agencies, and those individuals identified as Campus Security Authorities (CSAs). This report also includes disciplinary referrals (i.e., incidents not reported as an arrest or crime) associated with drugs, alcohol or weapons.
- Policy and Program Information. The policies and statements provided in this report include the most current information at the time of publishing.

## DAILY CRIME LOGS AND FIRE SAFETY LOGS

Daily Crime and Fire Safety Logs for the most recent 60 days are available at Security Services. Weekend and holiday logs are available the next business day. Questions or comments regarding any log entry items may be directed to Security Services.

## REPORTING A CRIME OR INCIDENT

Loma Linda University Health encourages that all crimes be reported to Security Services. If you are the victim of a crime or a witness to a crime on-campus, immediately go to a safe place and call the Security Operations Center at



909-558-4320 or 911 from on-campus phones. You may also use the blue lighted emergency call boxes located throughout the campus and healthcare facilities. Stay on the line with the dispatcher and report any details about the crime or incident (suspect clothing and appearance, physical description, vehicle, direction of travel, etc.) that may be helpful to law enforcement in their effort to identify potential suspects. Upon receiving information concerning an incident, a Security Officer will respond to take appropriate action and document the information as needed. Depending on the circumstances or situation, this action may require involving local law enforcement agencies. For crimes which occur off campus, contact the local law enforcement agency or you may contact Security Services and they will assist in directing you to the appropriate agency to respond and investigate the incident.

For non-emergency business, call 909-558-5419 or ext. 55419 from on-campus phones.

## VICTIM CONFIDENTIALITY

If you are the victim of a crime and do not wish to pursue action either criminally or through the Loma Linda University Health disciplinary system, you have the option of filing a confidential report with Security Services. Confidential reports of criminal incidents are included in the annual disclosure of crime statistics. You have the right to change the report at any time and initiate criminal or Loma Linda University Health disciplinary proceedings. You may make a report to Security Services as an anonymous party.



## **HARASSMENT**

Harassment is conduct that is reasonably perceived as: (1) creating an intimidating, hostile or offensive environment; (2) interfering with an individual's work performance; and/or (3) adversely affecting an individual's employment opportunities, or access to educational activities and programs. Harassment can occur in a variety of forms including, but not limited to, face-to-face encounters, acts by a third party aimed at the victim, and cyberbullying. Cyberbullying is defined as the use of e-mail, pagers, instant messaging, cell phones, social media, or other forms of information technology to harass, threaten or intimidate someone. Loma Linda University Health takes this very seriously and investigates all complaints of any type or form of harassment. Additional information is contained in the Student Handbook and Employee Handbook.

## **HATE CRIMES AND VIOLENCE**

A "hate crime" or "hate violence" is defined by statute as: "any act of physical intimidation or physical harassment, physical force or physical violence, or the threat of physical force or physical violence, that is directed against any person or group of persons because of the ethnicity, race, national origin, religion, gender, sexual orientation, disability, or political/religious beliefs of that person or groups of persons." Any incident of hate violence should be reported to Security Services for investigation and documentation. Loma Linda University Health does not condone or tolerate hate crimes or violence in any form and will ensure that the rights guaranteed by state law and the United States Constitution are protected for all people regardless of their ethnicity, race, national origin, religion, gender, sexual orientation, disability or political/religious beliefs. The Clery Act requires institutions to include hate crimes and violence data in their Annual Security and Fire Safety Report to the Department of Education.

## **EMERGENCY NOTIFICATIONS/TIMELY WARNINGS**

Loma Linda University Health is committed to the safety and well-being of students, faculty, employees, patients, and visitors of its campus and healthcare facilities. In the event of a significant emergency or dangerous situation involving the immediate threat to the health or safety of persons on the campus, Loma Linda University Health will notify the campus community using the emergency notification system, and other communication outlets to inform and advise of the situation; unless it is determined that notifications would otherwise compromise efforts to assist victims or contain or resolve the emergency.

Security Services will confirm the existence of a significant emergency and make the appropriate notifications. The Director of Security Services, or those officials authorized and designated, will decide when to notify the campus community, the content of the notification, the timing of its release, and the recipients of any emergency notification prior to it being sent to the community. The Director of Security Services, in conjunction with the Emergency Management team, will coordinate the response of emergency responders and any necessary evacuation of the community as necessary.

## **Loma Linda University Health tests the emergency response and evacuation procedures annually.**

An essential component of the emergency notification system is providing the Loma Linda University Health campus and healthcare community with timely warnings when crimes or situations pose an immediate, ongoing, or continuing threat to persons or property. Upon receiving information regarding a potential or ongoing threat, the Security shift supervisor will consult with the Director of Security Services who will determine whether a timely warning needs to be issued.



LLUH Alerts is our way of informing you of critical information during an emergency or crisis. Using multiple pathways such as desktop notifications, personal device alerts, phone calls, and text messages, we can notify employees, students, and visitors of emergency conditions on our campus.

You may opt to receive LLUH Alerts through the Everbridge Emergency Notification System on your personal device (cellular phone) as a convenience and benefit to you. By participating, you consent to receive text messages and/or voice calls sent through an automatic telephone dialing system. Message and data rates may apply. Message frequency varies.

Please help us keep you informed by updating your emergency contact information: Students: update “Emergency Notification” under the Personal Information Menu: <https://ssweb.llu.edu/> Employees: update your information at: <https://myllu.llu.edu/contacts/editContacts>



## ARMED ASSAILANTS/ACTIVE SHOOTERS

Should an armed assailant/active shooter event occur on campus, Loma Linda University Health endorses the Run, Hide, Fight tactical response for staff and students. Loma Linda University Health offers Run, Hide, Fight awareness training to staff and students as well as conducting Code Silver drills.

Upon receiving mass notification:

- Utilize Run, Hide, Fight response guidelines endorsed by the United States Department of Homeland Security.
- Avoid the area involved.
- Not attempt to contact the person(s) involved.
- Evacuate, if possible.
- Do not panic.
- Stay alert.

Faculty, staff, and students, if directly confronted with a Code Silver situation, should respond to this situation by performing the Run, Hide, Fight procedure:

**RUN:** If it is reasonably safe to do so, individuals should run from the area of the active shooter to a safer location further away or to an area they are able to secure or lockdown.

If running is not a safe option:

**HIDE:** Individuals who find themselves in a situation where they cannot safely exit the area should hide where they are. Be quiet, silence all mobile devices, turn off lights, and lock the door if possible. If not possible to lock the door, barricade the door, and hide out of sight. Do not open the door for anybody even if they state they are Law Enforcement Officers (LEOs). LEOs are trained to breach all areas and clear the entire building. LLUH Alerts may also be used to make “all clear” announcements.

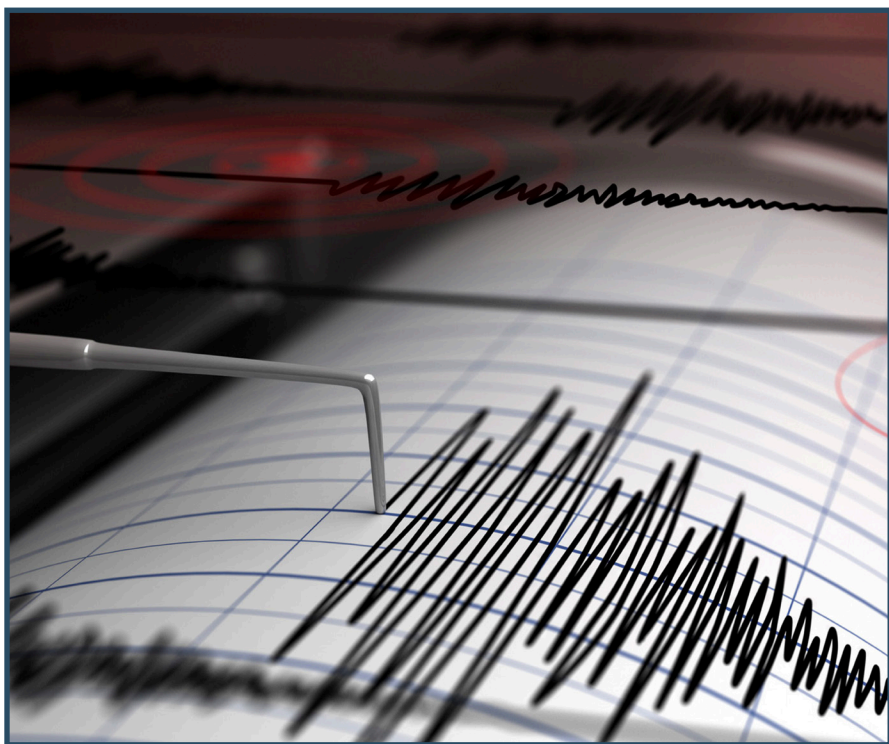
If the active shooter gains entrance to the area and discovers individuals:

**FIGHT:** Loma Linda University Health employees and students hiding must fight for their lives with improvised self-defense weapons such as fire extinguishers, flashlights, and office furniture if the assailant(s) enters an area where employees are hiding in. Fighting the assailant is a last-ditch effort after attempting to run and hide first.

## EMERGENCY DISASTER AND EVACUATION PROCEDURES

The Loma Linda University Health Emergency Operations Plan includes emergency response and evacuation procedures. The evacuation of campus buildings or the entire campus may be required due to emergency situations occurring on or near the campus. If an evacuation decision is made, Loma Linda University Health will notify the campus community using the Emergency Notification System (ENS).

Throughout the year the campus conducts regularly scheduled drills, exercises, and appropriate follow-up activities designed to improve emergency response on an ongoing basis. These tests and exercises, which may be announced or unannounced, are conducted in support of efforts to assess and evaluate emergency response plans and capabilities. After action briefings and corrective action plans may be developed and conducted. Procedures include the documentation of exercises, which list the exercise description, date, time, and whether they were announced or unannounced. Emergency response and evacuation procedures are also publicized annually in conjunction with such tests.



## EARTHQUAKE

During an earthquake the actual movement of the ground is seldom the direct cause of death or injury. Most casualties result from falling objects and debris. Earthquake shock waves can shake damage or demolish buildings and other structures. Make sure to keep heavy objects away from your bed or workspace and be sure to use secure hangers when putting pictures or other items on the wall. The following rules will help you survive:

## DURING AN EARTHQUAKE:

1. Remain calm. Think through any action you take. Calm others.
2. If indoors, watch for flying glass, falling plaster, bricks, light fixtures and other objects. Stay clear of high bookcases, shelves and other furniture which might slide or topple. Stay clear of windows and mirrors.
3. If you are in danger get under a table, desk or bed; or find a corner away from any windows. Usually it is best not to run immediately outside, but to move outside quickly once the shaking has stopped.
4. If you are in a classroom get under a desk. Do not run for an exit since stairways may be damaged or jammed with people. Power for elevators may fail.
5. If you are outside, avoid high buildings, walls, power poles and other objects which could fall. If possible, move to an open area, large parking lot, or lawn area away from all hazards. If you are in a car stop in the safest place available, again, in an open area. After an Earthquake:

## AFTER AN EARTHQUAKE:

1. Check around you for persons with injuries. Do not attempt to move seriously injured persons unless they are in immediate danger of further injury.
2. Check for fires or fire hazards.
3. Wear shoes in all areas near debris or broken glass.
4. Do not use matches, lighters, electrical switches or appliances, or anything with a spark or flame until you are sure no gas leaks exist.
5. Do not touch downed power lines or objects touched by the lines.
6. Do not use your telephone except for genuine emergency calls.
7. Do not go sightseeing. Keep streets clear for emergency vehicles.
8. Be prepared for aftershocks. Although most of these are smaller than the main shock, some may be large enough to cause additional damage.

This and other emergency protocols can be found on the One Portal.

## CRIME PREVENTION PROGRAMS

In an ongoing effort to further educate and prepare faculty and students, Loma Linda University Health administration in conjunction with Security Services provides continuous access to training and crime prevention programs through online learning portals, in-class presentations, electronic and physical publications, during the on-boarding process and other campus resources.

For additional resources regarding your specific needs, please contact Security Services directly and we will work to coordinate a training to meet the needs of your request. Topics could include: personal safety, sexual assault awareness, how to prevent theft of personal property and identity, and similar subjects.

## THEFT PREVENTION

Common items stolen on campus are laptops, wallets, purses, backpacks and bikes. More often than not these thefts are crimes of opportunity, with items left out, unsecured or unattended. Please keep all wallets, checkbooks, credit cards and cash on you at all times and out of sight. Leaving items on desks, in offices, or backpacks makes them more vulnerable to theft. If you do leave these items in your room or office, be sure the door and/or desk is closed and locked. Ideally, bags and backpacks should be within your view at all times. You also should not leave items (e.g., laptop computer, tablet, cell phone, wallet, purse, etc.) visible in your car. It is advisable for students to insure expensive items through additional insurance policies or family policies. Students and employees are encouraged to record the make, model, serial numbers and other identifying information on computers, electronic equipment, cameras, televisions and other valuable items. These records should be kept in a safe place other than on your computer.

## INTERNET SAFETY

Students are reminded that while the internet is a valuable tool and provides a vast amount of information and resources for learning, it also has some inherent dangers. Identity theft via the internet is a significant issue and can take years for a victim to recuperate from such an event. Sexual predators surf the web hoping to lure unsuspecting victims into sexually related conversations and/or face-to-face meetings. Students are encouraged to exercise caution and good judgment when visiting the web, especially those sites geared towards adolescent and young adult users. Students are advised to follow these safety tips when using the internet:

- Never give out identifying information such as full name, date of birth, Social Security number, home/school address and/or telephone number to someone you do not know or trust.
- Never give out financial information to someone you do not know or trust.
- Be cautious when engaging in conversations that become obscene, sexually explicit/suggestive, threatening, or make you feel uncomfortable.
- Remember that people online may not be who they say they are – the person may be a sexual predator, a scam artist, or even a police officer engaged in a “sting” operation.
- Be very careful about offers that involve you coming to a meeting or having someone come to your residence hall or school.
- If you receive unwanted messages, use blocking tools or settings to screen unwanted contacts. Additionally, you may seek the assistance of your service provider to block them.



## WEAPONS POLICY

In order to provide a safe environment for students, faculty, employees, patients, and visitors, no patient, student, visitor, faculty, or other employee shall be allowed to have in his/her possession while on the Loma Linda University Health premises any firearms or any illegal weapons as defined by the California Penal Code without specific Loma Linda University Health approval. Law enforcement personnel conducting official business and on-site armed security services are the exception. All persons not in compliance with this policy will be asked to leave the premises or be taken into custody by Security, if a clear violation of the law can be established. “Possession” for this policy is defined as on one’s person or in one’s motor vehicle, residence hall or work area.

Any suspected or observed violation of this policy should be immediately reported to Security Services. Students found to be in violation of the Weapons Possession Policy will be subject to discipline up to and including dismissal and arrest.

## SUBSTANCE AND ALCOHOL ABUSE

Loma Linda University Health is committed to providing an educational environment which is conducive to the development of every student. Because Loma Linda University Health believes that a lifestyle that is drug and alcohol free is essential for achieving this goal, it has established a policy that seeks to maintain a campus environment free of these substances.

In compliance with the Drug-Free Schools and Campuses Regulations of 1989 and the Drug-Free Workplace Act of 1988, Loma Linda University Health prohibits the unlawful use, possession, distribution, dispensing, or manufacture of controlled substances by its students and employees. Further, Loma Linda University Health requires any individual who receives federal funding to certify that they will not engage in the unlawful use, possession, distribution, dispensing, or manufacture of controlled substances while associated with Loma Linda University Health.

Loma Linda University Health reserves the right to investigate violations of the policy by students, employees, or faculty where reasonable suspicion exists. No search will be made without the authorization of the residence hall dean, dean of a school, Vice President, or President of Loma Linda University Health. Any search or required testing is to be treated with high confidentiality.

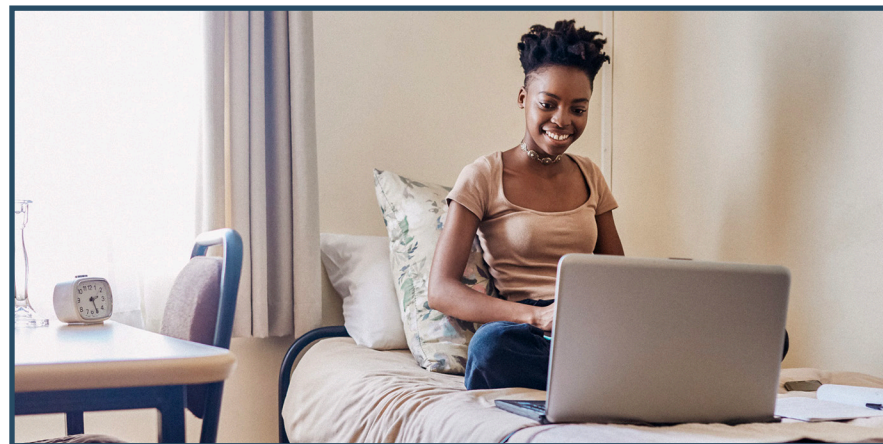
### Loma Linda University Health Sanctions

Unlawful possession, use, or distribution of alcohol or illicit drugs by students, staff, or faculty on Loma Linda University Health property, or as part of any Loma Linda University Health activity, may lead to sanctions within Loma Linda University Health. These include:

- A verbal or written reprimand;
- Completion of an appropriate rehabilitation program;
- A disciplinary warning, with notice that repetition of the offense or continuation of the offense may result in more serious sanction;
- Suspension from the University (student) or from employment (employee), or from a specified University activity or facility for a fixed period of time or until completion of an appropriate rehabilitation program;
- Expulsion from the University (student) or termination of employment (employee); and/or
- Other appropriate sanctions.

## External Sanctions

Unlawful possession, use, or distribution of alcohol or illicit drugs may lead to a referral to the appropriate local, state, and/or federal authorities for prosecution for a misdemeanor or a felony, depending on the nature of the offense. The sanctions for such offenses may include fines and/or imprisonment.



## COUNSELING AND TREATMENT PROGRAMS

Loma Linda University Health encourages individuals with alcohol or other drug-related problems to seek assistance. Loma Linda University Health provides an active educational program for its students and employees to help them develop an awareness of the risks involved in alcohol and drug use and to promote the benefits of a lifestyle free from these substances.

Loma Linda University Health, at its discretion, may provide therapeutic assistance for students and employees, who because of abuse of these substances have impaired function within the campus community.

The Loma Linda University Health Student Assistance Program (students) and the Employee Assistance Program (employees) offers ongoing educational, intervention, and personal assistance in the area of alcohol and drug abuse.

The Student Assistance Program also offers assistance in diagnostic evaluation, treatment, monitoring, and follow-up. The Employee and Student Counseling Services is located at: 11360 Mountain View Avenue, Suite B, Loma Linda, and can be reached by phone at 909-558-6050.

For more information on the Student Assistance Program, please refer to the Loma Linda University Student Handbook or contact Student Affairs located in the **Councilors Student Pavilion (11139 Anderson Street, Loma Linda, CA 92350) or call 909-558-4510 or ext. 44510 from an on-campus phone.**

## **PROHIBITING SEXUAL MISCONDUCT AND DISCRIMINATION ON THE BASIS OF SEX (TITLE IX)**

Title IX of the Education Amendments of 1972 (“Title IX”) prohibits discrimination on the basis of sex in educational programs and activities at institutions receiving federal financial assistance.

Loma Linda University and its affiliated educational sites is committed to providing a safe and supportive environment that is free from unlawful discrimination on the basis of sex in its admissions practices, in its employment practices, and in its educational programs or activities. Any form of sex discrimination and sexual misconduct, including harassment, coercion, intimidation, or sexual violence, is reprehensible; runs counter to LLU’s teachings and guiding beliefs; and will not be tolerated. In keeping with this commitment, Loma Linda University maintains a strict policy prohibiting unlawful discrimination or harassment based on personal characteristics of gender, sexual orientation, gender identity, race, color, religion, national origin, disability, age or veterans’ status. Also prohibited is retaliation of any kind against individuals who report alleged incidents of such allegations.



Questions regarding Title IX, including its application and/or concerns about noncompliance, should be directed to the Title IX Coordinator. For a complete copy of the policy or for more information, please visit the Title IX Policy or contact the Title IX Coordinator.

Mark Hubbard, Title IX Officer, 101 East Redlands Blvd, San Bernardino, CA 92408 Email: Mhubbard@llu.edu

Sophia Hamilton, Title IX Coordinator, 101 East Redlands Blvd, Suite 1400-B San Bernardino, CA 92408 Email: shamilton@llu.edu

A person may also file a complaint with the appropriate federal, state, or local agency within the time frame required by law. Depending upon the nature of the complaint, the appropriate agency may be the federal Equal Opportunity Commission (EEOC), Office for Civil Rights (OCR) of the U.S. Department of Education and/or the Department of Justice.

### **Office for Civil Rights (OCR) U.S. Department of Education**

**400 Maryland Avenue, SW**

**Washington, D.C. 20202-1100**

**Customer Service Hotline: 800-421-3481**

**Facsimile: 202-453-6012; TDD: 877-521-2172**

**Email: [OCR@ed.gov](mailto:OCR@ed.gov)**

**Web: <http://www.ed.gov/ocr>**

External inquiries regarding training pertaining to the medical school or medical center can be made externally to:

### **Centralized Case Management Operations**

**U.S. Department of Health and Human Services**

**200 Independence Avenue, S.W.**

**Room 509F HHH Bldg.**

**Washington, D.C. 20201**

**Toll-Free: 800-368-1019; TDD: 800-537-7697**

**Email: [OCRMail@hhs.gov](mailto:OCRMail@hhs.gov)**

**Web: <https://ocrportal.hhs.gov/ocr>**

## **DEFINITIONS OF TITLE IX TERMINOLOGY**

Sexual violence involves conduct relating to an actual, attempted, or threatened sexual act against a person's will or where a person is incapable of giving consent (due to age, use of drugs or alcohol, or because of an intellectual or other disability). Sexual violence includes rape, sexual assault, sexual battery, sexual abuse and sexual coercion. Examples include "date rape" or "acquaintance rape." Acts of sexual violence may also constitute violations of criminal or civil law subject to prosecution. Consent is defined as agreement, approval, or permission as to some act or purpose that is given knowingly, willingly, and voluntarily by a competent person. Consent can be withdrawn at any time. There is no consent when there is force, expressed or implied, or when coercion, intimidation, threats or duress is used. Whether a person has taken advantage of a position of influence over another person may be a factor in determining consent. Silence or absence of resistance does not imply consent. Past consent to sexual activity with another person does not imply ongoing future consent with that person or consent to that same sexual activity with another person. If a person is mentally or physically incapacitated or impaired so that such person cannot understand the fact, nature, or extent of the sexual situation, there is no consent; this includes impairment or incapacitation due to alcohol or drug consumption that meets this standard, or being asleep or unconscious. Retaliation occurs when intimidation, threats, coercion, or other discriminatory action is used against an individual who has brought a concern or reported a possible violation of a federal civil right. This includes formal or informal reports of a violation and reports regarding a violation of an individual's rights or the rights of others.

## **SEXUAL ASSAULT PREVENTION AND RESPONSE**

Loma Linda University Health prohibits acts of sexual assault, domestic violence, dating violence, and stalking and offers educational and preventative information concerning sexual misconduct, alcohol, high-risk behavior, and related topics during new student orientation sessions and workshops. Throughout the year, other programs addressing sexual assault, date rape, and other forms of sexual misconduct are offered to both male and female students in an effort to decrease the likelihood of rape and sexual assault.

Sexual assault is a crime of violence. Loma Linda University Health takes very seriously every reported case of rape, attempted rape, or other forms of sexual violence or abuse. If you are the victim of sexual violence, contact Security Services immediately. The department will notify law enforcement authorities, who will conduct a criminal investigation of the incident unless the victim voluntarily chooses otherwise. Timely reporting of an incident will enable law enforcement to conduct a thorough investigation and collect and preserve evidence. Even though law enforcement will take a report, they will strongly

consider and respect your wishes on whether or not to pursue criminal charges. The Office of Student Experience will also be notified to assist you in contacting professionals, family, or friends that you may need for emotional support. The Dean's Office will also make, or assist in making, any changes in the survivor's academic and/or living situations after an alleged sex offense if those changes are requested by the victim and are reasonably available.

An official complaint filed with Loma Linda University Health will begin an investigation and campus disciplinary proceedings against the accused. The accuser and the accused are entitled to the same opportunities to have others present during a disciplinary proceeding. Both the accuser and the accused must be informed of the outcome of any institutional disciplinary proceeding brought alleging a sex offense. A student found responsible for violating Loma Linda University Health's sexual misconduct policy could be criminally prosecuted and may be suspended or expelled from the University. Additional information on this process is contained in the Loma Linda University Student Handbook.

The organization will, upon request, disclose to the alleged victim of a crime of violence or a non-forcible sex offense, the report on the results of any disciplinary proceeding conducted by the organization against a student who is he alleged perpetrator of such crime or offense. If the alleged victim is deceased as a result of such crime or offense, the next of kin of such victim shall be treated as the alleged victim for purposes of this paragraph.

Victims have several reporting options, including those with confidentiality, and may pursue one or all of these options at any time. Victims have a right to have a friend, family member, sexual assault victim advocate, or other representative present while reporting the incident. They also have the right to have a sexual assault victim advocate and support person of their choice present with them during a rape examination. The campus Title IX Coordinator can assist in notifying the police.

Remember, reporting the crime does not lock you into a course of action, but it does preserve your rights. You have the right to change your mind about participating in criminal or University proceedings at any time.

## **Importance of Preserving Evidence**

It is important that you take steps to preserve and collect evidence; doing so preserves the potential options available following a sexual assault.

To preserve evidence:

- Do not wash your face or hands;
- Do not shower or bathe;
- Do not brush your teeth;
- Do not change clothes or straighten up the area where the assault took place;
- Do not dispose of clothes or other items that were present during the assault, or use the restroom; and
- Seek a medical exam immediately.

If you already cleaned up from the assault, you can still report the crime, as well as seek medical or counseling treatment.

Victims of dating and domestic violence and stalking should save other types of evidence such as:

- Text message conversations;
- Instant message conversations;
- Social networking pages;
- Call logs or any other types of communications; photographs or audio or video recordings; and
- Logs or other copies of documents.

Loma Linda University Health strongly encourages prompt reporting of all crimes and prohibited conduct. Prompt reporting allows for the collection and preservation of evidence, including physical evidence, digital media, and witness statements. The ability to effectively investigate and respond may be limited by delay

What to do if you have been sexually assaulted or experienced dating violence, domestic violence, or stalking:

- Go to a safe location.
- Preserve all physical evidence of the assault, even if you are unsure whether you want to report the crime. Do not shower, bathe, eat, drink, wash your hands or brush your teeth until you have had a medical examination.
- Get medical help as soon as possible.
- Call a trusted friend, family member or someone else who can provide emotional support.
- If off-campus, call 911 to reach the local law enforcement agency.

If on-campus, call Security Operations Center at 909-558-4320.

The Employee and Student Assistance Program offers numerous services from assessment and referral to crisis intervention and short-term counseling. If you are struggling with any issues that are impacting your ability to live your life to its fullest,



you can find the Employee and Student Assistance Program at: 11360 Mountain View Avenue, Suite B, Loma Linda, and can be reached by phone at 909-558-6050.

## **LOCAL LAW ENFORCEMENT INVOLVEMENT**

A victim or witness has the right to report, or decline to report, potential criminal conduct to law enforcement. Upon request, Loma Linda University Health will assist the individual in contacting law enforcement at any time. Under limited circumstances in which a perceived threat exists, Loma Linda University Health may independently notify law enforcement. Loma Linda University Health will comply with law enforcement request for cooperation and such cooperation may require Loma Linda University Health to temporarily suspend the fact-finding aspect of a Title IX investigation while the law enforcement agency is in the process of gathering evidence. Loma Linda University Health will promptly resume its Title IX investigation as soon as notified by the law enforcement agency that it has completed the evidence gathering process, which typically takes three (3) to ten (10) calendar days, although the delay in Loma Linda University Health's investigation may be longer in certain instances. Loma Linda University Health will implement appropriate interim steps during the law enforcement agency's investigation period to provide for the safety of the Complainant(s) and the campus community and the avoidance of retaliation.

## **SEX OFFENDER REGISTRY AND ACCESS TO RELATED INFORMATION**

The Federal Campus Sex Crimes Prevention Act went into effect October 28, 2000. This law requires institutions of higher education to issue a statement advising the campus community where law enforcement agency information provided by a state concerning registered sex offenders may be obtained. It also requires sex offenders already required to register in a state to provide notice, as required under State Law, of each institution of higher education in that state at which the person is employed, carries on a vocation, or is a student.

The State of California maintains a sex offense registry known as the Megan's Law Sex Offense Registry. You may view this site at the following location:

**San Bernardino County Sheriff's Department**  
**655 East 3rd Street**  
**San Bernardino, CA**  
**909-387-3545**

You may also access this information by visiting  
<https://www.meganslaw.ca.gov>.

## OTHER RESOURCES

National Domestic Violence Hotline – Call: 800-799-SAFE (7233) or 800-787-3224 (TTY). A crisis intervention and referral phone line for domestic violence.

State Coalition List – Directory of state offices that can help you find local support, shelter, and free or low-cost legal services. Includes all U.S. states, as well as the District of Columbia, Puerto Rico and the Virgin Islands. (National Coalition Against Domestic Violence.)

## RESIDENCE HALL MISSING STUDENT

Loma Linda University Health supports the health and safety of all of its students.

A student may be considered to be a “missing person” if the person’s absence is contrary to his/her usual pattern of behavior or unusual circumstances are suspected.

### Such conditions may consist of but are not limited to:

- a. A parent, roommate, suitemate or apartment-mate has reported the absence.
- b. Medical- or health-related problems (including mental health).
- c. The student has been absent from classes without notification and has not been seen elsewhere.
- d. An LLU official has made an inquiry of concern.
- e. Law enforcement officer inquiries.

Any member of the Loma Linda University Health community who believes that a student is missing should immediately notify Security Services at 909-558-4320. Upon receiving notification, Residence Hall Deans, the University Dean of Students office, Security Services and other applicable University personnel will make reasonable efforts to locate the student to determine their state of health or well-being. As part of the inquiry, the University reserves the right to communicate with emergency contacts to help determine the whereabouts of the resident.

If upon inquiry by staff and Security, the resident student has been determined to be missing, the following will occur:

- a. A University representative will attempt to notify the resident’s designated emergency contact person.
- b. If the student is under 18 years of age, a University representative will contact the custodial parent or legal guardian.

- c. Security will inform the appropriate law enforcement agency.
- d. Investigation will continue in collaboration with law enforcement agencies as appropriate.

Students living on-campus (LLU Residence Halls) have the option of identifying an individual to be contacted in case of emergency or unexplained absence. On an annual basis, or during registration, students will be given the option to change or update a missing person contact(s).

The contact information will be registered confidentially and the information will only be accessible to authorized campus officials, and may not be disclosed, except to law enforcement personnel in furtherance of a missing person investigation.



## BUILDING ACCESS

All residence halls are secured 24 hours a day and are accessible only to residents and authorized personnel who have keys or access cards. Visitors must contact the front desk monitor to gain access into the residence halls or apartments.

Other campus buildings, such as classrooms or laboratories, are typically open during normal business hours, and are closed from Friday sundown to Saturday sundown in observance of the Sabbath. LLU leadership will determine after-hours access to classrooms or laboratories.



## ON-CAMPUS SAFETY

At Loma Linda University Health, safety and security measures are designed to address every area of campus life, but a safe environment also depends on the awareness and cooperation of individual community members. Here are some common-sense steps you can take for personal safety and loss prevention:

- Never prop doors open, even for a short time.
- Valuables and electronics (e.g., wallets, purses, laptops, tables, cell phones) should never be left unattended.
- Do not leave valuables exposed on the seat or floorboard in your car.
- Keep your keys in your possession. Do not place them under outside doormats or in other obvious places.
- Avoid working or studying alone in a building at night.
- When walking through the campus at night, stay within well-lit walkways and try to walk with another person or in a group. If you cannot avoid walking alone at night, call Security for an escort.
- Avoid using stairs in remote sections of a building. Do not take shortcuts through isolated dark areas.
- If your purse or wallet is snatched, do not resist or fight back. Give it up rather than risk personal injury, and report the incident to Security immediately.
- Do not put an ID tag with your name, address, or license number on your key chain; if lost, the key chain could lead to theft at your residence or car.
- Carry only the cash and credit cards you need.
- Carry a whistle or other means of making a loud noise.
- Keep residential and vehicle doors and windows locked.
- Have your keys in hand when you approach your vehicle. Check front and back seats and the cargo area before entering.
- Keep your bike locked in a rack or storage facility when not using it.
- Do not put personal information (including ID badge images) on social media sites.

## OFF-CAMPUS RESIDENTIAL SAFETY

Students and employees living off campus should follow these precautions:

- Install and use deadbolt locks, existing peepholes, or a video doorbell system on your doors. Law enforcement officers, salesmen or repairmen on legitimate business will display credentials whenever asked. Be sure to request identification, or call a visitor's business, before admitting an unknown visitor into your home. Do not open your door to strangers in need; instead, offer to call for assistance. Windows should have effective locking devices.
- If you live alone, don't advertise it. Use only your first initial and last name on your mailbox.

- When moving into a house or apartment it is wise to have the door locks changed. Previous owners, tenants or past employees may still have keys.
- If you receive a wrong number telephone call, do not give the caller your name, address, or any information to indicate that you are alone. Do not prolong the conversation. If you received an obscene call hang up immediately, notify the local law enforcement agency, report it, and block the number if on a mobile device.
- Window shades and drapes should be closed after dark. Leave lights on in two or more rooms to indicate presence of other persons.
- Apartment laundry rooms, parking garages, and elevators can be environments for trouble. Be alert and cautious.
- Get to know your neighbors so you can watch out for each other and provide mutual protection.

## INTERACTIONS WITH UNHOUSED/HOMELESS PERSONS

As an academic medical center with an open campus, we have seen an increase in the unhoused or homeless persons on campus. While these individuals often need our help, we want to make sure that help is provided utilizing the appropriate resources and with everyone's safety in mind.

Here are a few opportunities for you to help them while keeping yourself safe:

- In general, don't engage someone by yourself. This is the most important guideline. To ensure you are always safe, never engage with a homeless person by yourself.
- To give or not to give. It's up to you, but if you do decide to give money or something else, do it without expectation or judgment. The money may not be used exactly as you would have liked. We encourage to give through a professional organization rather than directly.
- Behavioral health and substance abuse. Those suffering from a behavioral disorder, substance abuse or dependency can be unpredictable, and we encourage you to avoid confrontations and maintain a safe distance. Use caution in dealing with them and contact Security Services for help.
- If you are approached aggressively:
  - Create a safe distance and move away from the person.
  - Say "No, thank you."
  - Get help of someone nearby.
  - Report your interaction to authorities.

While being homeless is not a crime, many kinds of public conduct are illegal and should be reported immediately.

Please notify Security Services at 909-558-4320 or ext. 44320 if you encounter someone on campus who is loitering, panhandling, sleeping in restrooms or stairwells, or displaying behavior that is concerning or otherwise out of character for the campus areas.

## Resources:

San Bernardino County Homeless Partnership CalWORKs Homeless Assistance

## BICYCLES

Bicycles are a popular target for theft. Secure your bicycle with a high-security U-lock or large diameter cable/chain, and lock attached to an immovable object in an open, well lit, and highly visible location.

We urge cyclists to wear a protective helmet to minimize head injuries. Cyclists in California are required to obey the same rules of the road as a car while riding on city streets. Ride with the flow of traffic, and come to a complete stop at stop signs and red traffic control lights. You can obtain a copy of the bicycle rules of the road from any Department of Motor Vehicles office or online.

No bicycle or bicycle component may be locked or secured on campus to any sign/light post, bench, handrail, trees; or block any walkway, stairs, handicap access, or other locations or fixtures so as to create a potential hazard. Bicycles found under these or any other hazardous conditions may be removed by Security Services or the Parking and Traffic Department.

## THEFT OF VEHICLE PARTS AND FUEL

Catalytic converters are devices located underneath a vehicle that help reduce the amount of harmful emissions that are released into the atmosphere. The converter contains valuable metals, including platinum, rhodium, and palladium. It can take less than two minutes to steal these devices from a vehicle using battery-powered tools, and thieves can resell catalytic converters for hundreds, even thousands of dollars.

An indicator of a stolen catalytic converter is incredibly loud noise (“roaring”) when the vehicle is running or you attempt to accelerate.

To reduce the chance of having your catalytic converter stolen, the experts recommend:

- Report suspicious activity or theft immediately. This helps with trending data and prosecution when there may be multiple victims.
- Consider installing a catalytic converter anti-theft device. These are available from various manufacturers and at some auto dealers/shops.
- Engrave your vehicle’s VIN number on the catalytic converter.
- If parking a fleet truck at a business overnight, consider enclosing the vehicle in a secure area that is well-lit, locked, and alarmed.
- For personal vehicles, if possible, park in a garage. If this is not possible and the vehicle must be parked in a driveway, consider installing motion sensor security lights and a home surveillance system. While these may not provide complete security, it may make some thieves think twice — they may opt to leave the area and your car untouched.

Criminals use varied techniques to steal fuel — from diverting fuel at the pumps on a commercial account to siphoning from the gas fueling port to drilling a hole in the bottom of a gas tank and draining it dry. The most common targets for fuel theft are fleet vehicles with large tanks.

## What to look for:

- The smell of gas as you approach your vehicle.
- A puddle under your vehicle near the fuel tank.
- The vehicle will not start.
- The vehicle starts but the fuel gauge shows fuel is low and/or the check engine light comes on.
- Loosened gas caps the next time you fuel up.
- Any activity that you think is suspicious.



## PARKING

The Parking and Traffic Department is responsible for the administration of all parking regulations as approved by the various Loma Linda University Health entities. The Parking and Traffic Department is responsible for the issuance of all parking permits, serving both permanent and temporary needs. All faculty, students and staff are required to register any vehicle that will be used and/or parked on any of the organization’s campuses. Individuals may register their vehicles through the Loma Linda University Health Parking and Traffic Portal. The enforcement of parking regulations is overseen by the Parking Department and its team of Parking Enforcement Officers. We work diligently to maintain and improve the parking lots, as well as providing safe and secure parking lots and structures. We also work with other departments on the planning and implementation of additional parking facilities in the future. The leadership of this department also works hand-in-hand with City and State agencies for improvements and needed closures, as well as being members of local municipality’s public transportation committees. For additional information call 909-651-3025 or ext. 53025.

## CAMPUS SHUTTLE SERVICES / CAMPUS LINK

Loma Linda University Health operates a shuttle service (Campus Link) on campus for students, employees, and guests. Shuttles pick up and drop off passengers at parking lots and other designated locations on campus.

For routes and hours of operation or general information contact the Department of Transportation at 909-651-3020 or ext. 53020.

If the shuttle service has concluded daily operations, contact Security Services, and they will provide safety escorts from dusk to dawn.

## LOST AND FOUND

Calls for lost and found articles should be directed to Loma Linda University Medical Center Dispatch Services at 909-558-4350 or ext. 44350 during normal business hours. University Housekeeping also provides lost and found services for the campus. They can be reached at 909-558-4556 or ext. 44556.

## IMPORTANT CONTACT INFORMATION

### Department of Security Services

Calling from off-campus: 909-558-4320

Calling from on-campus: Ext. 44320

### Emergency

On-campus: \_\_\_\_\_ 911 (call will be directed to Security Operations Center)

Off-campus: \_\_\_\_\_ 911 (call will be directed to San Bernardino Sheriff's Office)

Cell phone: \_\_\_\_\_ 911 (California Highway Patrol)

Suicide and Crisis Lifeline: \_\_\_\_\_ 988 (from any off-campus phone)

## EMERGENCY TELEPHONES

For your safety and use, Blue Light Emergency Phones are located throughout the campus and healthcare facilities; including the parking lots and garages. Pushing the red button on the phone automatically dials directly to the Security Operations Center.

On-Campus Resources	On-Campus Extension	Off-Campus Number
Campus Bookstore _____	44567 _____	909-558-4567
Chaplain's Office _____	44367 _____	909-558-4367
Counseling Services _____	39534 _____	909-558-4505
Student Services _____	44630 _____	909-558-4630
Student Health _____	88770 _____	909-558-8770
Parking and Traffic Department _____	53025 _____	909-651-3025
Environment Health and Safety _____	14018 _____	909-651-4018
Campus Engineering _____	44558 _____	909-558-4558
Human Resources _____	14001 _____	909-651-4001
Risk Management _____	14010 _____	909-651-4010

## Off-Campus Resources

San Bernardino County Sheriff's Department _____	909-824-0680
San Bernardino Police Department _____	909-384-5742
Redlands Police Department _____	909-798-7681
Beaumont Police Department _____	951-769-8500
Murrieta Police Department _____	951-304-2677
City of Loma Linda _____	909-799-2800

## National Hotlines

National Domestic Violence Hotline _____	800-799-SAFE _____	800-799-7233
National Sexual Assault Hotline _____	800-656-HOPE _____	800-656-4673
National Suicide Prevention Lifeline _____	800-273-TALK _____	800-273-8255

Poison Control Hotline \_\_\_\_\_ 800-222-1222

We Tip – National Crime Reporting Hotline \_\_\_\_\_ 800-782-7463

## SECURITY SERVICES CONTACT INFORMATION

Security Services is located on the first level of the P2 parking structure on the corner of Campus Street and Violet Molnar Way.

Loma Linda University Health Security Services  
11206 Campus Street, Suite A  
Loma Linda, CA 92354

Office: 909-558-5419 or ext. 55419 from on-campus phones

Fax: 909-558-4821

Email: SecurityMC@llu.edu

Website: <https://lluh.org/patients-visitors/visitors/security-services>

<b>Office Business Hours</b>	Monday-Thursday:	8 a.m. – 5 p.m.
	Friday:	8 a.m. – 2 p.m.
	Saturday-Sunday:	CLOSED

## SECURITY SERVICES LEADERSHIP TEAM

Director _____	John Marshall
Lieutenant _____	Robert Schultz
Lieutenant (Murrieta) _____	Eric McLaughlin
Sergeant _____	Diego Cisneros
Sergeant _____	Anthony Hackie
Sergeant _____	Ana Zuniga
Corporal _____	Mario Rosario Delgado
Corporal _____	Alexay Bollmann
Corporal _____	Jose Hurtado

The Security leadership team can be reached via email at [SecurityMC@llu.edu](mailto:SecurityMC@llu.edu).

# SECURITY SERVICES REPORTS AND RECORDS

All reports, records, and related data compiled and maintained by the Security Services shall be considered property of Loma Linda University Health Risk Management.

## Campus Crime Statistics

Crime Classification	On Campus			Residence Community			Public Property			Non-Campus Property		
	2022	2021	2020	2022	2021	2020	2022	2021	2020	2022	2021	2020
Murder	0	0	0	0	0	0	0	0	0	0	0	0
Manslaughter	0	0	0	0	0	0	0	0	0	0	0	0
Rape	0	1	1	0	0	0	0	0	0	0	0	0
Fondling	8	4	2	0	0	0	0	0	0	0	0	0
Incest	0	0	0	0	0	0	0	0	0	0	0	0
Statutory Rape	0	0	0	0	0	0	0	0	0	0	0	0
Robbery	0	0	0	0	0	0	0	0	1	0	0	0
Aggravated Assault	0	1	1	0	0	0	0	0	1	0	0	0
Burglary	4	4	6	1	0	0	0	0	0	3	5	6
Motor Vehicle Theft	9	12	12	0	0	0	0	2	9	1	0	3
Arson	1	1	0	0	0	0	0	0	0	0	0	2
Domestic Violence	4	7	2	0	0	0	0	0	4	0	0	1
Dating Violence	0	0	0	0	0	0	0	0	0	0	0	0
Stalking	0	0	0	0	0	0	0	0	0	0	0	0
Liquor Law Violation Arrests	0	0	0	0	0	0	0	0	0	0	0	0
Drug Law Violation Arrests	3	3	2	0	0	0	0	0	0	0	1	2
Weapon Possession Arrests	0	1	0	0	0	0	0	0	0	2	0	0
Liquor Law Violation Referrals	0	0	0	0	0	0	0	0	0	0	0	0
Drug Law Violation Referrals	0	0	0	0	0	0	0	0	0	0	0	0
Weapon Possession Referrals	0	0	0	0	0	0	0	0	0	0	0	0

# SECURITY SERVICES REPORTS AND RECORDS

All reports, records, and related data compiled and maintained by the Security Services shall be considered property of Loma Linda University Health Risk Management.

## Hate Crime Statistics

Hate Crime Classification	On Campus			Residence Community			Public Property			Non-Campus Property		
	2022	2021	2020	2022	2021	2020	2022	2021	2020	2022	2021	2020
Murder	0	0	0	0	0	0	0	0	0	0	0	0
Manslaughter	0	0	0	0	0	0	0	0	0	0	0	0
Rape	0	0	0	0	0	0	0	0	0	0	0	0
Fondling	0	0	0	0	0	0	0	0	0	0	0	0
Incest	0	0	0	0	0	0	0	0	0	0	0	0
Statutory Rape	0	0	0	0	0	0	0	0	0	0	0	0
Robbery	0	0	0	0	0	0	0	0	0	0	0	0
Aggravated Assault	0	0	0	0	0	0	0	0	0	0	0	0
Burglary	0	0	0	0	0	0	0	0	0	0	0	0
Motor Vehicle Theft	0	0	0	0	0	0	0	0	0	0	0	0
Arson	0	0	0	0	0	0	0	0	0	0	0	0
Larceny/Theft	0	0	0	0	0	0	0	0	0	0	0	0
Simple Assault	0	0	0	0	0	0	0	0	0	0	0	0
Intimidation	0	0	0	0	0	0	0	0	0	0	0	0
Destruction/Damage, Vandalism of Property	0	0	0	0	0	0	0	0	0	0	0	0

**For more information, contact Security Services.**

# ANNUAL FIRE SAFETY REPORT

## Publishing Policy Statements and Fire Statistics

Because Loma Linda University Health is an organization that maintains on-campus student housing facilities, we must publish an annual fire safety report by October 1. The purpose of this report is to disclose fire safety policies and procedures related to on-campus student housing and to disclose statistics for fires that occurred in those facilities.

## Fire Statistics

There were no fires in on-campus housing between January 1 and December 31, 2022.

No injuries, no deaths and no property damage occurred as a result from any fire.

## Fire Safety System Descriptions

Housing Facility (with address)	Type	Fire Alarm System (e.g., Simplex)	Audibles	Visibles	Manual Pull Stations	System Smoke/Heat Detectors	Stand-alone Smoke/Heat Detectors	Fire Suppression/Sprinklers	Fire Walls and Doors
Daniells Residence (24910 Mound St.)	Apt.	Simplex	X			X		X	
Daniells Residence (24920 Mound St.)	Apt.	Simplex	X			X		X	X
Daniells Residence (24930 Mound St.)	Apt.	Simplex	X		X	X		X	
Daniells Residence (24950 Mound St.)	Apt.	Simplex	X			X		X	
Daniells Residence (24960 Mound St.)	Apt.	Simplex	X			X		X	
Daniells Residence (24970 Mound St.)	Apt.	Simplex	X			X		X	
Daniells Residence (24980 Mound St.)	Apt.	Simplex	X			X		X	
Daniells Residence (25020 Mound St.)	Apt.	Simplex	X	X	X	X		X	X
Lindsay Hall (24898 Sanitarium Dr.)	Dorm	Simplex	X	X	X	X		X	X

## Fire Drills

In 2022, one fire drill was conducted at each residence hall. These drills were activated alarm drills and involved University students and staff.

Fire extinguisher training was conducted for the resident assistants in September 2022.



## Fire Safety Policy Statements

### 1. Smoking

Smoking is prohibited in all organizational use properties owned and operated by Loma Linda University.

### 2. Open Flames in Residences/Facilities

- a. It is a violation of policy to light any material on fire on campus.
- b. Candles, incense, and other open flame devices are prohibited for use inside university facilities and residences. Those individuals wishing to utilize candles in observance of a religious holiday or any other event shall contact the Office of Environmental Health and Safety (EH&S) to obtain permission and information concerning fire prevention.
- c. Students will be held financially accountable for any damage they cause as a result of violating this policy and will be referred to the disciplinary process.

### 3. Electrical Safety in Residences

Occupants residing in Loma Linda University housing facilities shall comply with the below-listed rules and the manufacturer's safety directions when utilizing portable electrical appliances.

- a. Irons, hair dryers, coffee pots, hot plates, and other heat-producing appliances shall never be left unattended while turned on or in use.
- b. Heat-producing and high-wattage appliances shall be plugged directly into an electrical wall outlet unless approved by Campus Engineering and Environmental Health and Safety.
- c. Use of multi-outlet power strips shall include circuit breaker protection, and are intended for low-wattage devices only (e.g. alarm clocks, laptop computers, and small electronic devices).
- d. Extension cords are prohibited.
- e. Numerous heat-producing or high-wattage electrical devices shall not be utilized at the same time on a single electrical circuit.
- f. Open heating element appliances (e.g., toasters) are prohibited. Heat-producing cooking appliances shall be used only in kitchens.
- g. Space heaters are prohibited.
- h. All electrical appliances and devices shall be NRTL<sup>1</sup> approved and maintained in good condition.
- i. Damage caused by electrical appliances that are not owned by LLU is the responsibility of the resident(s).

NRTL<sup>1</sup> – Nationally Recognized Testing Laboratory (e.g., UL, ETL, & FM)

## Student Housing Evacuation Procedures

In preparation for an event of fire or other emergency requiring evacuation, occupants of student housing should be familiar with the building-specific evacuation plan. In general, during an emergency evacuation, use the nearest and safest way out to exit the building. Refer to the RACE Procedures in the Life Safety section for more information. If a University-issued evacuation plan is not applicable or not required for your residence, develop a plan of your own. It is important to have a pre-determined relocation point outside the building assigned to the occupants of your residence. If you would like a copy of your building's evacuation plan, contact the dean. If you would like assistance developing a new evacuation plan, contact the Office of Environmental Health and Safety 909-651-4019 or ext. 14019.

## Fire Safety Education & Training

Student fire safety education is performed at orientation and at various locations throughout the year depending on each school. The Fire Extinguisher Training schedule is posted on the Environmental Health and Safety intranet page on the One Portal. Hall/floor monitors in dormitories are required to attend Fire Extinguisher Training annually. Fire Extinguisher Training is required tri-annually for all employees and is open to students as well throughout the year and includes information about the fire plan, use and types of extinguishers, evacuation procedures and other emergency procedures.

## Reporting Procedures

If you see any instance of open flame or other burning in a place not intended to contain the burning or in an uncontrolled manner, immediately report the exact location, extent, and nature of the fire to Security Operations Center by house phone (911) or by non-campus phone 909-558-4320. Also, the Office of Environmental Health and Safety should be notified as soon as possible at 909-651-4019 or ext. 14019.

## Plans for Future Fire Safety Improvements

1. Our resident assistant (RA) fire safety inspection program has been in full effect for three years and is going strong. In the upcoming year, we plan to train seasoned and new RAs on proper fire extinguisher use, proper fire safety inspection procedures and compliance/deficiency reporting.
2. We have grown our Fire & Life Safety team from five to nine members over the past couple of years. This has brought us a new Fire Protection Inspector to the University. He has been and will continue to work diligently ensuring that our fire alarm system inspection, testing, and maintenance program not only meets but exceeds the standard set forth by our authority having jurisdiction, Loma Linda Fire Department.
3. Our Fire Systems Assistant will be taking over maintaining all records and conducting all monthly inspections for our dormitory and student apartment fire extinguishers, emergency lights and exit signs. This will ensure that discrepancies are found quickly and corrections can be made without delay.



## Fire Safety and Emergency Protocols Quick Reference Guide

### Fire Plan - RACE

Rescue	Rescue persons in danger
Alarm	Pull fire alarm and dial 911
Contain	Close doors and windows
Extinguish	Extinguish or EVACUATE

### Use of Fire Extinguishers - PASS

Pull	Pull the pin
Aim	Aim nozzle at base of fire
Squeeze	Squeeze the handle
Sweep	Sweep nozzle side to side

### Emergency Protocols - Codes

Code <b>RED</b>	Fire Emergency
Code <b>BLUE</b>	Adult Medical Emergency
Code <b>WHITE</b>	Pediatric Medical Emergency
Code <b>PINK</b>	Infant Abduction (<12 months)
Code <b>PURPLE</b>	Child Abduction (>12 months)
Code <b>YELLOW</b>	Bomb Threat
Code <b>GRAY</b>	Combative Person
Code <b>SILVER</b>	Hostage/Weapon/Active Shooter
Code <b>ORANGE</b>	Hazardous Material Spill/Release
Code <b>GREEN</b>	Missing High-Risk Patient
Code <b>TRIAGE</b>	EOP Activation: Alert/Internal/External



*The Annual Security and Fire Safety Report is prepared and published by the Loma Linda University Health Department of Security Services.*



LOMA LINDA UNIVERSITY  
HEALTH

**MANY STRENGTHS. ONE MISSION.**

*A Seventh-day Adventist Organization* | **LLUH.ORG**